



# ULM Warhawks Men's Basketball

## University of Louisiana at Monroe



ULM (19-11, 13-6 SBC)  
**WARHAWKS**

Vs.

Texas State (13-15, 7-12 SBC)  
**BOBCATS**



Game 31

Saturday, March 7 • 4:00 p.m. (CT)

Fant-Ewing Coliseum (7,000) • Monroe, La.

Live Stream: Warhawks All-Access (Online Only)

Radio: KLIP LA 105.3 FM, Nick White (PXP)

Twitter: @ULM\_MBB

### ULM Quick Notes

- ULM will honor Chinedu Amajoyi, Tylor Ongwae, Evan Sims and Marvin Williams on Senior Day with a special presentation before the game. All four joined the ULM men's basketball program in 2013 and are on pace to graduate in the spring

- The Warhawks are 26-18 all-time against Texas State, including 16-5 at home

- ULM goes for its 11th 20-win season in school history and the first since 2001-02

- The Warhawks have posted the most single-season SBC wins in school history with 13. The 19 wins overall are the most since 2001-02

- ULM has locked up the No. 3 seed at the SBC Championships and a first-round bye. It will play its first postseason game (Quarterfinals) on Friday, March 13 at 7:30 p.m. against either South Alabama, UALR or Texas State. ULM was picked to finish sixth in the SBC Preseason Poll

- The Warhawks are playing for their fifth season sweep of the year. ULM completed the season-sweep over rival UL-Lafayette for the first time since 1971-72. The Warhawks also swept South Alabama, UALR and Troy. It was the second year in a row that ULM swept both South Alabama and UALR

- In the first meeting between the two teams this year, ULM won 62-59 on the road on Jan. 10. Senior Tylor Ongwae registered a game-high 17 points. ULM jumped out to a 10-point lead at halftime and then held off the Bobcats after junior Majok Deng stole an inbounds pass on the final possession

- On the year, ULM has held opponents to under 60 points 14 times, including nine times in SBC play

- ULM is one of five teams left in the nation to not allow 75 points in a single game this season. The list also includes Saint Peters, Utah, Baylor and New Hampshire

- The Warhawks are 11-3 at home this season and 401-172 (.700) all-time in Fant-Ewing Coliseum

### ULM MEN'S BASKETBALL SCHEDULE

Sat, Nov. 15	# at UAB	W, 74-65
<b>Mon, Nov. 17</b>	<b>Champion Baptist</b>	<b>W, 106-39</b>
Fri, Nov. 21	# at No. 8 Florida	L, 61-56 (OT)
Wed, Nov. 26	# vs. Coastal Carolina	L, 61-48
Thurs, Nov. 27	# vs. Robert Morris	L, 71-54
<b>Sat, Dec. 6</b>	<b>Louisiana College</b>	<b>W, 83-55</b>
<b>Tues, Dec. 9</b>	<b>Northwestern State</b>	<b>W, 82-74</b>
Sat, Dec. 13	at New Mexico	L, 54-46
<b>Tues, Dec. 16</b>	<b>Central Baptist</b>	<b>W, 78-53</b>
<b>Fri, Dec. 19</b>	<b>LSU-Alexandria</b>	<b>W, 76-71</b>
Sun, Dec. 21	at Samford	L, 64-50
Tues, Dec. 30	at Georgia State*	L, 65-45
<b>Mon, Jan. 5</b>	<b>Arkansas State*</b>	<b>W, 70-61</b>
Thurs, Jan. 8	at UT Arlington*	W, 76-73 (OT)
Sat, Jan. 10	at Texas State*	W, 62-59
<b>Thurs, Jan. 15</b>	<b>Troy*</b>	<b>W, 63-54</b>
<b>Sat, Jan. 17</b>	<b>UALR*</b>	<b>W, 64-52</b>
Mon, Jan. 19	at UL-Lafayette*	W, 57-55
<b>Thurs, Jan. 22</b>	<b>UT Arlington*</b>	<b>L, 61-57</b>
<b>Sat, Jan. 24</b>	<b>Georgia Southern*</b>	<b>L, 57-53</b>
Thurs, Jan. 29	at Troy*	W, 58-55 (OT)
<b>Sat, Jan. 31</b>	<b>South Alabama*</b>	<b>W, 67-61</b>
Thurs, Feb. 5	at UALR*	W, 77-61
Sat, Feb. 7	at Georgia Southern*	W, 71-68 (OT)
<b>Thurs, Feb. 12</b>	<b>UL-Lafayette*</b>	<b>W, 67-55</b>
<b>Sat, Feb. 14</b>	<b>Appalachian State*</b>	<b>W, 69-58</b>
Sat, Feb. 21	at Arkansas State*	L, 70-68
Thurs, Feb. 26	at South Alabama*	W, 75-57
Sat, Feb. 28	at Appalachian State*	L, 66-43
<b>Thurs, March 5</b>	<b>Georgia State*</b>	<b>L, 58-50</b>
<b>Sat, March 7</b>	<b>Texas State*</b>	<b>4:00 PM</b>
Fri, March 13	SBC Championships%	7:30 PM

All times Central and subject to change. **Bold** indicates home game; \*-Sun Belt game; %-SBC Tournament; #Battle 4 Atlantis

**We are ULM.** Please note that there are only two correct versions of our institution's name, the preferred acronym ULM and the full name, the University of Louisiana at Monroe. Any other reference, including Louisiana-Monroe, UL-Monroe, La.-Monroe, LAM, or simply Monroe, are incorrect.

### Media Relations Contacts

Robbie Kleinmuntz (Primary)	Michael Garabedian
Assistant Director	Graduate Assistant
kleinmuntz@ulm.edu	garabemc@warhawks.ulm.edu
O: 318-342-5462	O: 318-342-5461
C: 847-912-5380	C: 305-926-8420



# ULM Warhawks Men's Basketball

## University of Louisiana at Monroe



**Keith Richard**  
Head Coach

Fifth Year at ULM  
14th Season Overall

Alma Mater: ULM (1982)

### THE RICHARD FILE

#### COACHING HONORS

- 1999 Sun Belt Coach of the Year
- Has been part of the coaching staff for seven NCAA Tournament and three NIT teams

#### COACHING CAREER

Season	School	Position	Record
1984-85	ULM	Graduate Assistant	17-12
1985-86	ULM	Graduate Assistant	20-10/NCAA
1986-87	Marshall	Assistant Coach	25-6/NCAA
1987-88	Marshall	Assistant Coach	24-8/NIT
1988-89	Marshall	Assistant Coach	15-15
1989-90	ULM	Assistant Coach	22-8/NCAA
1990-91	ULM	Assistant Coach	25-8/NCAA
1991-92	ULM	Assistant Coach	19-10/NCAA
1992-93	ULM	Assistant Coach	26-5/NCAA
1993-94	ULM	Assistant Coach	19-9
1994-95	La. Tech	Assistant Coach	14-13
1995-96	La. Tech	Associate Head Coach	11-17
1996-97	La. Tech	Associate Head Coach	15-14
1997-98	La. Tech	Associate Head Coach	12-15
1998-99	La. Tech	Head Coach	19-9
1999-00	La. Tech	Head Coach	21-8
2000-01	La. Tech	Head Coach	17-12
2001-02	La. Tech	Head Coach	22-10/NIT
2002-03	La. Tech	Head Coach	12-15
2003-04	La. Tech	Head Coach	15-15
2004-05	La. Tech	Head Coach	14-15
2005-06	La. Tech	Head Coach	20-13/NIT
2006-07	La. Tech	Head Coach	10-20
2008-09	LSU	Assistant Coach	27-8/NCAA
2009-10	LSU	Assistant Coach	11-20
2010-11	ULM	Head Coach	7-24
2011-12	ULM	Head Coach	3-26
2012-13	ULM	Head Coach	4-23
2013-14	ULM	Head Coach	10-17
2014-15	ULM	Head Coach	19-11

#### PLAYING CAREER

- Played for ULM from 1978-82; Coached by Lenny Fant, Benny Hollis & Mike Vining
- 1979 Atlantic Sun Tournament Champions, NIT
- 1980 Atlantic Sun Regular Season Champions
- 1982 Atlantic Sun Tournament Champions, NCAA
- Two-time team captain ('81 & '82)
- Led team in assists twice

#### EDUCATION

- Bachelor's degree in general business, ULM (1982)
- Master's degree in guidance counseling, ULM (1986)

### ULM Quick Notes Continued...

- Senior Tylor Ongwae leads the team in both scoring (14.0 ppg) and rebounding (7.0 rpg). He's a three-time LSWA, two-time SBC and two-time CSM Player of the Week winner this season. Ongwae ranks second in the SBC in free throw percentage (.848). He has scored at least 20 points six times this year and 15 times in his career. Ongwae also has seven career double-doubles including four this season

- Sophomore Nick Coppola leads the SBC in assist:turnover ratio (2.2) and is third in assists (3.9 apg). He's played 40 minutes (or more) 13 times this season and 22 times in his career. He played six straight 40 minute games, a school record, breaking Maurice Bell's string of five in a row in 1999-2000. Coppola scores 9.5 points per game on the year and is shooting a team-high .381 (45-118) from beyond-the-arc

- Junior Majok Deng puts in 11.1 points per game in league action and is shooting .364 (24-66) from three-point range. He averages 1.5 blocks per game on the year, second-best in the SBC. Deng has swatted a block in 24 games this season and at least two blocks 14 times. He has posted five double-doubles on the year.

- Junior Justin Roberson has reached double-figures in scoring in five of the last six games. He averages 9.2 points per game on the year and leads the team with 34 steals

- Junior DeMondre Harvey is coming off a career performance on Thursday where he registered career-bests of 13 points and 15 rebounds in 33 minutes against Georgia State. It was his second double-double of the season

- ULM ranks 13th in the country in three-point field goal percentage defense (.295) and 14th in field goal percentage defense (.383). It also leads the conference in blocks with 4.3 per game

- The Warhawks have surpassed their conference win total from last season by six games and have also surpassed their overall win total by nine games when they finished 10-17 (7-11 SBC)

- ULM is 16-1 on the season when it has at least three double-figure scorers and 9-0 when it shoots over 50 percent from the field

- The Warhawks won seven of their last nine games road games this season. It included a stretch of six road victories in a row, the most since 1993-94

- ULM finished 5-2 in February. The five wins were the most since 1999-2000. It wrapped up the month of January with an 8-2 record, its best January record since 2001-02

- The Warhawks are receiving votes in the latest CollegeInsider Mid-Major Top-25 Poll. They have been as high as No. 22 this season

- This season, the Warhawks etched two win streaks of six games in the same year for the first time since 1992-93

- Twice this season the Warhawks erased a 13-point second half deficit to come back and win in overtime. They did it at UT Arlington and Troy. Keith Richard is 20-9 all-time in overtime in his head coaching career and 3-0 SBC this year

- ULM posted an 18-point win over South Alabama on the road in the second meeting this year, the largest win over USA in school history in 18 meetings. Roberson went off for 18 points on six made field goals, six free throws, five



# ULM Warhawks Men's Basketball

## University of Louisiana at Monroe



### ULM Quick Notes Continued...

offensive rebounds, four assists, three steals and a block

- Ongwae won Sun Belt Conference Player of the Week, College Sports Madness SBC Player of the Week and Louisiana Player of the Week on Feb. 9. He averaged 20 points per game on the week and led the Warhawks to a pair of victories including a road win at Georgia Southern to catapult them into first-place

- It marked the second SBC and CSM weekly awards and third LSWA weekly award for Ongwae this season. ULM is also the only team in the SBC to win three weekly awards this year as senior Marvin Williams won on Jan. 12

- Ongwae was also named to the Capital One Academic All-District First-Team, the only one from the Sun Belt Conference

- Senior Marvin Williams was named SBC Player of the Week and Co-Louisiana Player of the Week on Jan. 12, 2015. Williams shot 26-33 (.798) and averaged 20.7 points on the week. He posted a career-high 22 points against Red Wolves and then matched his scoring and rebounding highs with 22 and 13 against the Mavs, respectively. Williams' Player of the Week honors came on a stretch of three games in five days where the Warhawks went undefeated

- Ongwae's first couple weekly awards came when he won Co-LSWA Player of the Week on Dec. 22, 2014 and Sun Belt Conference Player of the Week on Nov. 18, 2014. He was named to the Preseason All-SBC Second-Team after earning four postseason awards in 2013-14

- The Warhawks have won three SBC Player of the Week awards this season with Ongwae winning twice. ULM has had two different players earn SBC Player of the Week honors in the same season for the first time in school history

- Ongwae has won the Warhawk of the Week award nine times in his career, the most in the award's two-year history

- ULM has had five different players tally a double-double and eight different players reach double-figure scoring in a game this season

- At the start of conference play, ULM shot up to the top of the standings after its first six-game winning streak of the year. It was the most consecutive SBC victories in school history. It was also the most league wins in-a-row since 1998-99 when it was a member of the Southland Conference

- The Warhawks closed out non-conference play with a winning record for the first time since 2007-08

- Earlier this season, ULM took eighth-ranked Florida to overtime. Coppola hit a three-pointer with 19 seconds left to level the score at 51. ULM led 54-53 with 3:00 remaining in overtime after a three-point play from Ongwae

- The 61 points allowed versus No. 8 Florida was the lowest ULM has ever let up against a ranked opponent in program history

- ULM hung around in front of 13,710 fans at The Pit against New Mexico in a closely contested 54-46 decision. ULM went on an 11-0 run in the second half to make it a six-point game with 3:48 remaining

## HOME COURT ADVANTAGE

### 401-172 All-Time in Fant-Ewing Coliseum

#### ULM RECORDS IN FANT-EWING

Year	Games	Record	Pct.	Avg. Attend.
1971-72	10	6-4	.600	4,190
1972-73	11	8-3	.727	3,232
1973-74	11	8-3	.727	3,250
1974-75	12	11-1	.917	3,454
1975-76	13	10-3	.769	5,451
1976-77	13	9-4	.692	5,073
1977-78	13	10-3	.769	4,459
1978-79	16	15-1	.937	5,215
1979-80	14	10-4	.714	3,678
1980-81	16	8-8	.500	3,067
1981-82	16	13-3	.812	3,808
1982-83	14	12-2	.857	2,946
1983-84	16	11-5	.688	2,098
1984-85	13	9-4	.692	2,380
1985-86	15	14-1	.933	2,114
1986-87	13	8-5	.615	2,582
1987-88	12	10-2	.833	2,582
1988-89	12	8-4	.667	2,861
1989-90	14	13-1	.928	2,949
1990-91	14	14-0	1.000	3,327
1991-92	12	9-3	.750	2,710
1992-93	14	14-0	1.000	3,892
1993-94	14	10-4	.714	3,351
1994-95	12	9-3	.750	3,619
1995-96	11	8-3	.727	2,182
1996-97	12	9-3	.750	1,822
1997-98	11	7-4	.636	1,301
1998-99	11	7-4	.636	1,913
1999-00	14	11-3	.786	2,003
2000-01	13	9-4	.692	935
2001-02	12	12-0	1.000	3,437
2002-03	12	7-5	.583	1,412
2003-04	13	9-4	.692	1,624
2004-05	13	6-7	.462	1,296
2005-06	13	8-5	.615	793
2006-07	14	14-0	1.000	1,952
2007-08	12	5-7	.417	1,338
2008-09	14	8-6	.571	907
2009-10	14	8-6	.571	1,398
2010-11	13	4-9	.308	1,400
2011-12	13	0-13	.000	1,438
2012-13	12	3-9	.250	1,255
2013-14	12	6-6	.500	1,513
2014-15	14	11-3	.786	1,748
TOTALS	573	401-172	.700	



# ULM Warhawks Men's Basketball

## University of Louisiana at Monroe



### ULM's Rankings in the SBC

#### On the season, ULM ranks...

First in FG% def: .383	Coppola first in ast:turn: 2.2
First in 3FG% def: .295	Ongwae second in FT%: .848
First in blocks: 4.3 bpg	Deng second in blocks: 1.5 bpg
Second in scoring def: 60.5 ppg	Coppola second in mins: 36.1 mpg
Second in FT%: .707	Coppola third in assists: 3.9 apg
Third in def. rebs: 25.6 drpg	Deng third in def. rebs: 5.0 drpg
Third in ast:turn ratio: 1.1	Coppola sixth in 3FG%: .381
Third in assists: 13.3 apg	Ongwae sixth in rebs: 7.0 rpg
Third in reb. margin: +2.4	
Third in off. reb%: .323	
Third in reb. def.: 34.3	
Third in def. reb%: .698	

#### In SBC Games Only, ULM ranks...

First in scoring def: 60.3 ppg	Coppola first in mins: 37.5 mpg
Second in FG% def: .393	Ongwae third in FT%: .851
Second in 3FG% def: .303	Coppola third in ast:turn: 2.0
Second in reb. margin: +2.2	Ongwae fourth in rebs: 7.2 rpg
Second in def reb%: .715	Coppola fourth in assists: 3.6 apg
Third in blocks: 3.4 bpg	Ongwae fourth in mins: 36.4 mpg
Third in ast:turn: 1.1	Deng fifth in blocks: 1.2 bpg
Third in reb. def: 33.8	
Third in def rebs: 25.2 drpg	

### Capital One Academic 2014-15 All-District First-Team (District 6)

Brandon Bos (South Dakota), Senior, Markham, Ontario  
3.57; Kinesiology & sports science

Mike Gesell (Iowa), Junior, South Sioux City, Neb.  
3.93; Finance

Chris Kading (North Dakota St.), Junior, De Pere, Wis.  
3.80; Exercise science

Tylor Ongwae (ULM), Senior, Eldoret, Kenya  
3.45; Business management

Jarrod Uthoff (Iowa), Junior, Cedar Rapids, Iowa  
3.34 Economics

*Note: Ongwae was the only Academic All-District First-Team winner from the Sun Belt Conference in any of the eight districts*

### ULM Quick Notes Continued...

- The Warhawks posted a historic 106-39 victory over Champion Baptist in their home opener. The 67-point win broke the school record for largest margin of victory. It was also the most points ULM scored in a game since Feb. 17, 2001 in a game against UTSA. Additionally, the 67-point victory is the largest of any game in the Sun Belt Conference this season

- The Warhawks followed it up with a 28-point home win over Louisiana College as both Deng and Coppola recorded double-doubles

- ULM has had two players tally double-doubles in the same game twice this season, both at home (against La. College and Northwestern St.)

- Coppola dished out a career-high 12 assists against Louisiana College in a double-double. Coppola started all 27 games last year at point guard as a true freshman and has started every game of his career

- The Warhawks opened the season with a 74-65 victory on the road over UAB. It was the first opening night victory for ULM since Nov. 14, 2008 when it defeated Morehead State, 56-54 and the first opening night road win since Nov. 23, 1999 when it won at Samford, 67-60. Additionally, it was the largest opening night road victory since Dec. 1, 1979 when it beat Nicholls State, 79-69

- ULM has 15 home games on the 2014-15 schedule, the most since 1985-86

- Keith and Lance Richard have gone up against four other father/son duos this season. The Richard's took on Josiah/Eric Capaci at Champion Baptist, Billy/Billy Donovan at Florida, Cullen/Craig Neal at New Mexico and Ron/R.J. Hunter at Georgia State

- ULM was tabbed for sixth in the Sun Belt Conference Preseason Poll. It returns three starters and six players overall on a team that more-than doubled both its overall and conference win totals

- The Warhawks entered the 2014-15 season without any APR penalties for the first time in five years. Keith Richard turned the program around academically since inheriting APR sanctions when he took over at the helm, and the Warhawks have won back-to-back Sun Belt Conference academic awards

- For the first time since the NCAA instituted academic progress rate (APR) scores in 2003-04, the ULM men's basketball program tallied a perfect 1,000 score in the 2013-14 season. Over the summer, ULM was the only Division I institution in the state of Louisiana to earn the Team Academic Excellence award from the NABC

- On Jan. 24, 2015, legendary former head coach Mike Vining was honored at halftime in the game against Georgia Southern with the raising of a "402" banner. It represents his total number of regular season and postseason victories at ULM over 24 seasons at the helm





# ULM Warhawks Men's Basketball

## University of Louisiana at Monroe



### WE ARE ULM

#### 12 REGULAR SEASON CHAMPIONSHIPS

1961-62 - Gulf States Conference  
 1964-65 - Gulf States Conference  
 1978-79 - Atlantic Sun Conference  
 1979-80 - Atlantic Sun Conference  
 1985-86 - Southland Conference  
 1989-90 - Southland Conference  
 1990-91 - Southland Conference  
 1992-93 - Southland Conference  
 1993-94 - Southland Conference  
 1995-96 - Southland Conference  
 1996-97 - Southland Conference  
 2006-07 - Sun Belt Conference West Division

#### NINE POST-SEASON APPEARANCES

1978-79 - NIT  
 1981-82 - NCAA Tournament  
 1985-86 - NCAA Tournament  
 1987-88 - NIT  
 1989-90 - NCAA Tournament  
 1990-91 - NCAA Tournament  
 1991-92 - NCAA Tournament  
 1992-93 - NCAA Tournament  
 1995-96 - NCAA Tournament

#### EIGHT TOURNAMENT CHAMPIONSHIPS

1978-79 - Atlantic Sun Conference  
 1981-82 - Atlantic Sun Conference  
 1985-86 - Southland Conference  
 1989-90 - Southland Conference  
 1990-91 - Southland Conference  
 1991-92 - Southland Conference  
 1992-93 - Southland Conference  
 1995-96 - Southland Conference

### Numerical Roster

No.	Player	Pos.	Ht.	Wt.	Cl.	Hometown (Previous School)
0	Williams, Marvin	C	6-8	245	Sr.	Memphis, Tenn. (NW Florida State College)
1	Brown, Alex	G	6-4	185	Fr.	Vernon, Fla. (Vernon HS)
2	Harvey, DeMondre	F	6-7	210	Jr.	Minden, La. (Pearl River CC)
3	Cooper, Prince	G	6-4	215	So.	Freeport, Bahamas (Miami-Dade College)
4	Foster, Mack	G	6-2	185	Jr.	Beulah, Miss. (East Mississippi CC)
5	Samuel, Jamaal	F	6-9	205	Jr.	New Orleans, La. (Illinois State)
10	Taylor, Roderick	F	6-8	210	Fr.	Harker Heights, Texas (Harker Heights HS)
11	Coppola, Nick	G	5-11	190	So.	Richmond, Va. (Benedictine Prep)
12	Ongwae, Tylor	F	6-7	205	Sr.	Eldoret, Kenya (Ranger College)
13	Deng, Majok	F	6-10	190	Jr.	Adelaide, Australia (Indian Hills CC)
20	Amajoyi, Chinedu	G	6-3	195	Sr.	Rancho Cucamonga, Calif. (Kilgore College)
22	Richard, Lance	G	5-10	175	RFr.	Monroe, La. (Sterlington HS)
32	Roberson, Justin	G	6-1	185	Jr.	Natchitoches, La. (Western Texas)

### COACHING STAFF

Head Coach: Keith Richard (ULM '82)  
 Assistant Coach: Ryan Cross (Buffalo '95)  
 Assistant Coach: Lonnie Cooper (Louisiana Tech '99)

Assistant Coach: J.A. Anglin (LSU Shreveport '10)  
 Graduate Assistant: Luke Richard  
 Team Manager: Gil Williams

### PRONUNCIATION

Keith/Lance/Luke RICHARD    Ree-SHARD  
 CHINEDU AMAJOYI    Chin-ih-due Om-uh-joy  
 TYLOR ONGWAE    Tie-ler Ong-why  
 MAJOK Deng    Muh-jook Day-ng  
 Justin ROBERSON    Rob-er-sin  
 Nick COPPOLA    Cuh-pole-uh



### BY CLASS

Seniors (3)..... Chinedu Amajoyi  
 ..... Tylor Ongwae  
 ..... Marvin Williams  
 Juniors (5) ..... Majok Deng  
 ..... Mack Foster  
 ..... DeMondre Harvey  
 ..... Justin Roberson  
 ..... Jamaal Samuel  
 Sophomores (2) ..... Prince Cooper  
 ..... Nick Coppola  
 Freshmen (3)..... Alex Brown  
 ..... Lance Richard  
 ..... Roderick Taylor

### BY POSITION

Guards (7) ..... Chinedu Amajoyi  
 ..... Alex Brown  
 ..... Prince Cooper  
 ..... Nick Coppola  
 ..... Mack Foster  
 ..... Lance Richard  
 ..... Justin Roberson  
 Forwards (5)..... Majok Deng  
 ..... DeMondre Harvey  
 ..... Tylor Ongwae  
 ..... Jamaal Samuel  
 ..... Roderick Taylor  
 Center (1) ..... Marvin Williams

### BY STATE/COUNTRY

Australia..... Majok Deng  
 Bahamas ..... Prince Cooper  
 California..... Chinedu Amajoyi  
 Florida..... Alex Brown  
 Kenya ..... Tylor Ongwae  
 Louisiana (4) ..... DeMondre Harvey  
 ..... Lance Richard  
 ..... Justin Roberson  
 ..... Jamaal Samuel  
 Mississippi..... Mack Foster  
 Tennessee ..... Marvin Williams  
 Texas ..... Roderick Taylor  
 Virginia ..... Nick Coppola



# ULM Warhawks Men's Basketball

## University of Louisiana at Monroe



### ULM Quick Facts

Location \_\_\_\_\_ Monroe, La.  
 Enrollment \_\_\_\_\_ 8,527  
 Founded \_\_\_\_\_ 1931  
 Nickname/Mascot \_\_\_\_\_ Warhawks/Ace  
 Colors \_\_\_\_\_ Maroon & Gold  
 President \_\_\_\_\_ Dr. Nick Bruno  
 Director of Athletics \_\_\_\_\_ Brian Wickstrom  
 Conference \_\_\_\_\_ Sun Belt  
 Affiliation \_\_\_\_\_ NCAA Division I  
 All-Time Record \_\_\_\_\_ 929-825 (63rd season)  
 Winning Seasons \_\_\_\_\_ 38 (20+ wins 10 times)  
 Home Venue \_\_\_\_\_ Fant-Ewing Coliseum (7000)  
 Playing Surface \_\_\_\_\_ Maple  
 Opened \_\_\_\_\_ 1971  
 Press Row Phone \_\_\_\_\_ 318-342-6920

Head Coach \_\_\_\_\_ Keith Richard  
 Record at ULM \_\_\_\_\_ 43-101 (fifth year)  
 Career Record \_\_\_\_\_ 193-218 (14th year)  
 Assistant Coach \_\_\_\_\_ Ryan Cross  
 Assistant Coach \_\_\_\_\_ Lonnie Cooper  
 Assistant Coach \_\_\_\_\_ J.A. Anglin  
 Graduate Assistant \_\_\_\_\_ Luke Richard  
 Team Manager \_\_\_\_\_ Gil Williams  
 Athletic Trainer \_\_\_\_\_ Jeremy Teblum

Website \_\_\_\_\_ www.ulmwarhawks.com  
 Facebook \_\_\_\_\_ www.facebook.com/warhawks  
 Twitter \_\_\_\_\_ @ULM\_MBB

### Scouting Texas State

The Bobcats have clinched a spot in the SBC Championships. They enter play with a 13-15 overall record and 7-12 in SBC games. Texas State is playing for seeding and can finish as high as sixth-place.

Texas State has won two of its last three games, but fell on the road to Appalachian State, 67-64 on Thursday. Emani Gant is the only Bobcat averaging in double-figures as he tallies 13.0 points and 7.0 rebounds per game.

The Bobcats are one of the best defensive teams in the league, holding opponents to just 60.1 points per game on the season. In SBC games only, Texas State limits the opposition to a league-low .281 from beyond-the-arc.

In the first meeting this season between ULM and Texas State, the Warhawks jumped out to a 10-point halftime lead and then held on to win, 62-59. ULM never trailed in the contest. The Warhawks were clinging to a 61-59 lead with three seconds remaining when Texas State had the ball underneath ULM's basket. Junior Majok Deng came up with a huge steal on the inbounds play as he intercepted the pass to seal it. Senior Tylor Ongwae was a clutch 9-9 at the free throw line and posted 17 points and eight rebounds. Emani Gant led the Bobcats with 14 points while Ethan Montalvo had 12.

Danny Kaspar is in his second year as head coach after guiding Stephen F. Austin to a 246-141 mark in 13 seasons. He coached SFA to five 20-win seasons in his last six years. Kaspar is the 16th winningest active Division I coach with 474 wins.

### All-Time Series History vs. Texas State

ULM leads, 26-18  
 At ULM: ULM leads, 16-5  
 At TXST: Tied, 10-10  
 On Neutral Courts: TXST leads, 3-0

### ULM's Record by Starting Lineup

Coppola-Foster-Ongwae-Deng-Williams (6-2, 6-2 SBC)  
 Coppola-Roberson-Ongwae-Samuel-Deng (6-3, 5-3 SBC)  
 Coppola-Roberson-Ongwae-Deng-Williams (4-4, 2-0 SBC)  
 Coppola-Amajoyi-Ongwae-Samuel-Harvey (0-1, 0-1 SBC)  
 Coppola-Roberson-Ongwae-Deng-Harvey (3-1, 0-0 SBC)

### Where ULM Ranks Nationally...

13th in 3FG% defense (.295)  
 14th in FG% defense (.383)  
 39th in scoring defense (60.6 ppg)  
 47th in defensive rebs (25.7 drpg)

### 2014-15 SBC Preseason

**Poll** (First-place votes in parenthesis)

- Georgia State 121 (11)
- UL-Lafayette 110
- UALR 94
- UT Arlington 75
- Arkansas State 73
- ULM 69**
- Texas State 43
- Troy 42
- Georgia Southern 38
- South Alabama 38
- Appalachian State 23

### SUN BELT CONFERENCE PRESEASON TEAMS

#### Preseason First Team All-Conference

Jelani Hewitt (Georgia Southern, Senior, Guard)  
 Ryan Harrow (Georgia State, Senior, Guard)  
 R.J. Hunter (Georgia State, Junior, Guard)  
 Shawn Long (UL Lafayette, Senior, Forward)  
 Lonnie McClanahan (UT Arlington, Senior, Guard)

#### Preseason Second Team All-Conference

Josh Hagins (UALR, Junior, Guard)  
 James White (UALR, Junior, Forward)  
 Xavian Rimmer (UL Lafayette, Senior, Guard)  
**Tylor Ongwae (ULM, Senior, Forward)**  
 Emani Grant (Texas State, Junior, Forward)

#### Preseason Third Team All-Conference

Tab Hamilton (Appalachian State, Senior, Guard)  
 Trent Wiedeman (Georgia Southern, Senior, Guard)  
 Curtis Washington (Georgia State, Senior, Forward)  
 Jamel Outler (UT Arlington, Senior, Guard)  
 Kevin Thomas (Troy, Senior, Forward)

#### Preseason Player of the Year

R.J. Hunter (Georgia State, Junior, Guard)



**SUN BELT**  
CONFERENCE



# ULM Warhawks Men's Basketball

## University of Louisiana at Monroe



### SUN BELT CONFERENCE STANDINGS

*As of 3/7/15 (standings not in tiebreak order)*

School	SBC	Pct.	Overall	Pct.	Streak
T-1. Georgia Southern	14-5	.737	21-7	.750	W1
T-1. Georgia State	14-5	.737	21-9	.700	W2
<b>3. ULM</b>	<b>13-6</b>	<b>.684</b>	<b>19-11</b>	<b>.633</b>	<b>L2</b>
4. UL-Lafayette	12-7	.632	18-12	.600	W5
5. UT Arlington	10-9	.526	16-13	.552	L1
T-6. Appalachian State	8-11	.421	11-17	.393	W2
T-6. South Alabama	8-11	.421	10-20	.333	W1
8. UALR	8-12	.400	13-17	.433	L2
9. Texas State	7-12	.368	13-15	.464	L1
10. Arkansas State	6-13	.316	11-17	.393	L2
11. Troy	5-14	.263	10-18	.357	L3

#### Thursday's Games

Ga. Southern 76, UT Arlington 64  
 App State 67, Texas State 64  
 Georgia State 58, ULM 50  
 UL-Lafayette 75, UALR 69  
 S. Alabama 81, Arkansas State 76

#### Saturday's Games

Ga. Southern at Georgia St., 1:00 PM  
 UT Arlington at App. St., 2:30 PM  
 Texas State at ULM, 4:00 PM  
 Troy at South Alabama, 4:05 PM  
 UL-Lafayette at Arkansas St., 7:05 PM

Name	Career 10+ Points	Career 10+ Rebs	Career 10+ Asts
Tylor Ongwae	44 times (20+ 15 times)	7 times	
Nick Coppola	23 times		1 time
Marvin Williams	17 times (20+ 2 times)	3 times	
Jamaal Samuel	6 times		
DeMondre Harvey	3 times	2 time	
Chinedu Amajoyi	3 times		
Name	Season 10+ Points	Season 10+ Rebs	Season 10+ Asts
Tylor Ongwae	20 times (20+ 6 times)	4 times	
Majok Deng	17 times (20+ 1 time)	5 times	
Nick Coppola	14 times		1 time
Justin Roberson	13 times		
Marvin Williams	7 times (20+ 2 times)	1 time	
Jamaal Samuel	5 times		
Mack Foster	4 times		
DeMondre Harvey	2 times	2 times	

#### Single-Game Categorical Highs 2014-15

Points	Tylor Ongwae - 25, two times, vs. CEBC/LSUA
Field Goals Made	Tylor Ongwae - 10, vs. Central Baptist
3FG Made	Nick Coppola - 5, at Arkansas State
Free Throws Made	Tylor Ongwae - 10, vs. South Alabama
Rebounds	Majok Deng/DeMondre Harvey - 15
Assists	Nick Coppola - 12, vs. Louisiana College
Steals	4, three times (Foster/Roberson/Ongwae)
Blocks	Majok Deng/Jamaal Samuel - 4, at UAB/vs. C. Car.
Minutes	Nick Coppola (45, 2 times)/Tylor Ongwae (45, once)

#### Number of times in 2014-15 a ULM student-athlete has led the team in...

Player	Points	Rebs	Assists	FGM	FGA	FTM	FTA	3FGM	3FGA	Blocks	Steals	Mins
Tylor Ongwae	13	12	8	16	22	12	11	5	4	5	11	14
Majok Deng	5	13	3	5	3	6	5	13	8	18	5	3
Marvin Williams	5	5		5	3	5	7			7	3	
Nick Coppola	4	1	15	5	2	2	1	16	15		9	18
Jamaal Samuel	2	2		2	3			6	6	8	4	
Justin Roberson	2	2	9	3	2	8	10			4	10	2
Mack Foster	1		2	1			1	6	3	3	4	1
DeMondre Harvey	1	4	1	1			2			2	4	
Lance Richard								1	2			
Chinedu Amajoyi			1									
Prince Cooper							1					1

*Note: If multiple student-athletes tie in a category in a single game, they all receive credit for leading the team*



# ULM Warhawks Men's Basketball

## University of Louisiana at Monroe



### 2014-15 ULM MEN'S BASKETBALL

#### ULM Combined Team Statistics (as of Mar 06, 2015)

#### All games

Overall Stats

RECORD:	OVERALL	HOME	AWAY	NEUTRAL
ALL GAMES	19-11	11-3	8-6	0-2
CONFERENCE	13-6	6-3	7-3	0-0
NON-CONFERENCE	6-5	5-0	1-3	0-2

#	Player	gp-gs	min	avg	Total		3-Point		F-Throw		Rebounds											
					fg-fga	fg%	3fg-fga	3fg%	ft-fa	ft%	off	def	tot	avg	pf	dq	a	to	blk	stl	pts	avg
12	Ongwae, Tylor	30-30	1050	35.0	155-363	.427	16-63	.254	95-112	.848	75	134	209	7.0	67	2	86	74	11	30	421	14.0
13	Deng, Majok	30-29	878	29.3	105-238	.441	31-93	.333	56-74	.757	55	150	205	6.8	69	2	33	42	44	15	297	9.9
11	Coppola, Nick	30-30	1083	36.1	100-240	.417	45-118	.381	39-53	.736	6	81	87	2.9	57	1	118	53	0	27	284	9.5
32	Roberson, Justin	30-21	817	27.2	107-261	.410	6-34	.176	56-78	.718	28	85	113	3.8	75	5	79	51	8	34	276	9.2
00	Williams, Marvin	21-16	474	22.6	73-129	.566	1-3	.333	32-51	.627	36	62	98	4.7	49	1	10	35	19	9	179	8.5
05	Samuel, Jamaal	30-10	521	17.4	77-192	.401	24-87	.276	10-18	.556	18	82	100	3.3	51	2	11	29	28	12	188	6.3
04	Foster, Mack	30-8	546	18.2	58-146	.397	19-68	.279	13-26	.500	15	38	53	1.8	49	1	29	23	5	18	148	4.9
02	Harvey, DeMondre	30-5	442	14.7	42-70	.600	0-0	.000	21-37	.568	44	63	107	3.6	31	0	12	16	11	6	105	3.5
22	Richard, Lance	18-0	56	3.1	7-26	.269	6-24	.250	0-0	.000	1	5	6	0.3	4	0	0	2	1	2	20	1.1
03	Cooper, Prince	17-0	116	6.8	8-17	.471	0-0	.000	1-9	.111	7	13	20	1.2	6	0	9	8	1	3	17	1.0
20	Amajoyi, Chinedu	18-1	117	6.5	4-18	.222	0-8	.000	2-2	1.000	1	11	12	0.7	8	0	13	7	0	1	10	0.6
Team											48	43	91				8					
Total.....		30	6100		736-1700	.433	148-498	.297	325-460	.707	334	767	1101	36.7	466	14	400	348	128	157	1945	64.8
Opponents.....		30	6104		645-1682	.383	172-583	.295	352-493	.714	330	700	1030	34.3	443	-	329	351	98	157	1814	60.5

TEAM STATISTICS	ULM	OPP	Date	Opponent	Score	Att.
SCORING	1945	1814	11/15/14	at UAB	W 74-65	2403
Points per game	64.8	60.5	11/17/14	CHAMPION BAPTIST	W 106-39	1078
Scoring margin	+4.4	-	11/21/14	at Florida	Lot 56-61	11003
FIELD GOALS-ATT	736-1700	645-1682	11/26/14	vs Coastal Carolina	L 48-61	2426
Field goal pct	.433	.383	11/27/14	vs Robert Morris	L 54-71	2136
3 POINT FG-ATT	148-498	172-583	12/6/14	LOUISIANA COLLEGE	W 83-55	1053
3-point FG pct	.297	.295	12/09/14	NORTHWESTERN STATE	W 82-74	1082
3-pt FG made per game	4.9	5.7	12/13/14	at New Mexico	L 46-54	13710
FREE THROWS-ATT	325-460	352-493	12/16/14	CENTRAL BAPTIST	W 78-53	1060
Free throw pct	.707	.714	12/19/14	LSUA	W 76-71	1201
F-Throws made per game	10.8	11.7	12/21/14	at Samford	L 50-64	1053
REBOUNDS	1101	1030	* 12/30/14	at Georgia State	L 45-65	1371
Rebounds per game	36.7	34.3	* 01/05/15	ARKANSAS STATE	W 70-61	1418
Rebounding margin	+2.4	-	* 1/8/15	at UTA	Wot 76-73	1074
ASSISTS	400	329	* 1/10/15	at Texas State	W 62-59	1612
Assists per game	13.3	11.0	* 01/15/15	TROY	W 63-54	1676
TURNOVERS	348	351	* 01/17/15	UALR	W 64-52	1793
Turnovers per game	11.6	11.7	* 1/19/15	at UL-Lafayette	W 57-55	4213
Turnover margin	+0.1	-	* 01/22/15	UTA	L 57-61	1571
Assist/turnover ratio	1.1	0.9	* 01/24/15	GEORGIA SOUTHERN	L 53-57	2898
STEALS	157	157	* 01/29/15	at TROY	Wot 58-55	2289
Steals per game	5.2	5.2	* 01/31/15	SOUTH ALABAMA	W 67-61	1878
BLOCKS	128	98	* 2/5/15	at UALR	W 77-61	1676
Blocks per game	4.3	3.3	* 02/07/15	at GEORGIA SOUTHERN	Wot 71-68	2427
ATTENDANCE	24469	53084	* 02/12/15	UL-LAFAYETTE	W 67-55	3502
Home games-Avg/Game	14-1748	14-3466	* 02/14/15	APPALACHIAN STATE	W 69-58	1388
Neutral site-Avg/Game	-	2-2281	* 2/21/15	at ARKANSAS STATE	L 68-70	1916
			* 02/26/15	at SOUTH ALABAMA	W 75-57	1834
			* 2/28/15	at APPALACHIAN STATE	L 43-66	1941
			* 02/05/15	GEORGIA STATE	L 50-58	2871
Score by Periods	1st	2nd	OT	Totals		
ULM	919	995	31	1945		
Opponents	819	968	27	1814		

\* = Conference game





# ULM Warhawks Men's Basketball

## University of Louisiana at Monroe



### 2014-15 ULM MEN'S BASKETBALL

#### ULM Combined Team Statistics (as of Mar 05, 2015)

#### Conference games

Conference Stats

RECORD:	OVERALL	HOME	AWAY	NEUTRAL
ALL GAMES	13-6	6-3	7-3	0-0
CONFERENCE	13-6	6-3	7-3	0-0
NON-CONFERENCE	0-0	0-0	0-0	0-0

#	Player	gp-gs	min	avg	Total		3-Point		F-Throw		Rebounds				pf		a	to	blk	stl	pts	avg
					fg-fga	fg%	3fg-fga	3fg%	ft-fa	ft%	off	def	tot	avg	dq							
12	Ongwae, Tylor	19-19	691	36.4	88-227	.388	13-50	.260	57-67	.851	45	91	136	7.2	39	1	53	49	7	23	246	12.9
13	Deng, Majok	19-18	592	31.2	75-164	.457	24-66	.364	37-49	.755	39	90	129	6.8	49	2	22	30	23	8	211	11.1
00	Williams, Marvin	11-10	296	26.9	50-81	.617	0-0	.000	20-29	.690	23	42	65	5.9	25	1	7	24	9	5	120	10.9
32	Roberson, Justin	19-10	512	26.9	63-170	.371	3-22	.136	41-58	.707	24	45	69	3.6	48	3	50	26	6	19	170	8.9
11	Coppola, Nick	19-19	712	37.5	59-149	.396	26-74	.351	23-30	.767	3	60	63	3.3	34	0	69	35	0	16	167	8.8
05	Samuel, Jamaal	19-9	306	16.1	47-117	.402	13-50	.260	0-3	.000	9	46	55	2.9	28	2	6	14	14	4	107	5.6
04	Foster, Mack	19-8	386	20.3	38-100	.380	13-50	.260	11-20	.550	9	31	40	2.1	32	1	14	18	2	8	100	5.3
02	Harvey, DeMondre	19-1	252	13.3	20-34	.588	0-0	.000	13-24	.542	24	35	59	3.1	19	0	8	7	4	4	53	2.8
03	Cooper, Prince	10-0	53	5.3	5-6	.833	0-0	.000	0-5	.000	2	5	7	0.7	5	0	4	4	0	2	10	1.0
22	Richard, Lance	8-0	22	2.8	2-8	.250	2-7	.286	0-0	.000	1	2	3	0.4	1	0	0	1	0	0	6	0.8
20	Amajoyi, Chinedu	10-1	53	5.3	0-3	.000	0-3	.000	2-2	1.000	0	4	4	0.4	1	0	4	1	0	1	2	0.2
Team											27	26	53					4				
Total.....		19	3875		447-1059	.422	94-322	.292	204-287	.711	206	477	683	35.9	281	10	237	213	65	90	1192	62.7
Opponents.....		19	3877		407-1036	.393	112-370	.303	220-312	.705	189	453	642	33.8	275	-	203	210	57	94	1146	60.3

TEAM STATISTICS	ULM	OPP	Date	Opponent	Score	Att.
SCORING	1192	1146	* 12/30/14	at Georgia State	L 45-65	1371
Points per game	62.7	60.3	* 01/05/15	ARKANSAS STATE	W 70-61	1418
Scoring margin	+2.4	-	* 1/8/15	at UTA	Wot 76-73	1074
FIELD GOALS-ATT	447-1059	407-1036	* 1/10/15	at Texas State	W 62-59	1612
Field goal pct	.422	.393	* 01/15/15	TROY	W 63-54	1676
3 POINT FG-ATT	94-322	112-370	* 01/17/15	UALR	W 64-52	1793
3-point FG pct	.292	.303	* 1/19/15	at UL-Lafayette	W 57-55	4213
3-pt FG made per game	4.9	5.9	* 01/22/15	UTA	L 57-61	1571
FREE THROWS-ATT	204-287	220-312	* 01/24/15	GEORGIA SOUTHERN	L 53-57	2898
Free throw pct	.711	.705	* 01/29/15	at TROY	Wot 58-55	2289
F-Throws made per game	10.7	11.6	* 01/31/15	SOUTH ALABAMA	W 67-61	1878
REBOUNDS	683	642	* 2/5/15	at UALR	W 77-61	1676
Rebounds per game	35.9	33.8	* 02/07/15	at GEORGIA SOUTHERN	Wot 71-68	2427
Rebounding margin	+2.2	-	* 02/12/15	UL-LAFAYETTE	W 67-55	3502
ASSISTS	237	203	* 02/14/15	APPALACHIAN STATE	W 69-58	1388
Assists per game	12.5	10.7	* 2/21/15	at ARKANSAS STATE	L 68-70	1916
TURNOVERS	213	210	* 02/26/15	at SOUTH ALABAMA	W 75-57	1834
Turnovers per game	11.2	11.1	* 2/28/15	at APPALACHIAN STATE	L 43-66	1941
Turnover margin	-0.2	-	* 02/05/15	GEORGIA STATE	L 50-58	2871
Assist/turnover ratio	1.1	1.0				
STEALS	90	94				
Steals per game	4.7	4.9				
BLOCKS	65	57				
Blocks per game	3.4	3.0				
ATTENDANCE	18995	20353				
Home games-Avg/Game	9-2111	10-2035				
Neutral site-Avg/Game	-	0-0				

\* = Conference game

Score by Periods	1st	2nd	OT	Totals
ULM	559	607	26	1192
Opponents	521	608	17	1146



# ULM Warhawks Men's Basketball

## University of Louisiana at Monroe



### ULM - TEAM GAME HIGHS

POINTS	106	CHAMPION BAPTIST (11/17/14)
	83	LOUISIANA COLLEGE (12/6/14)
	82	NORTHWESTERN STATE (12/09/14)
	78	CENTRAL BAPTIST (12/16/14)
	77	at UALR (2/5/15)
FIELD GOALS MADE	41	CHAMPION BAPTIST (11/17/14)
	35	LOUISIANA COLLEGE (12/6/14)
FIELD GOAL ATTEMPTS	70	at UTA (1/8/15)
	69	CHAMPION BAPTIST (11/17/14)
FIELD GOAL PERCENTAGE	.594 (41-69)	CHAMPION BAPTIST (11/17/14)
	.577 (30-52)	at UALR (2/5/15)
3 PT FIELD GOALS MADE	10	at GEORGIA SOUTHERN (02/07/15)
	9	at ARKANSAS STATE (2/21/15)
	9	at UTA (1/8/15)
	9	at Florida (11/21/14)
	9	CHAMPION BAPTIST (11/17/14)
3 PT FG ATTEMPTS	31	at UTA (1/8/15)
	26	at TROY (01/29/15)
3 PT FG PERCENTAGE	.600 (6-10)	at Samford (12/21/14)
	.526 (10-19)	at GEORGIA SOUTHERN (02/07/15)
FREE THROWS MADE	19	UALR (01/17/15)
	17	LSUA (12/19/14)
	17	NORTHWESTERN STATE (12/09/14)
FREE THROW ATTEMPTS	30	UALR (01/17/15)
	24	CHAMPION BAPTIST (11/17/14)
FREE THROW PERCENTAGE	.938 (15-16)	SOUTH ALABAMA (01/31/15)
	.923 (12-13)	at UALR (2/5/15)
REBOUNDS	48	CHAMPION BAPTIST (11/17/14)
	47	at UTA (1/8/15)
	47	NORTHWESTERN STATE (12/09/14)
ASSISTS	21	LOUISIANA COLLEGE (12/6/14)
	21	CHAMPION BAPTIST (11/17/14)
STEALS	14	CHAMPION BAPTIST (11/17/14)
	12	LOUISIANA COLLEGE (12/6/14)
BLOCKED SHOTS	10	CHAMPION BAPTIST (11/17/14)
	8	NORTHWESTERN STATE (12/09/14)
TURNOVERS	20	LOUISIANA COLLEGE (12/6/14)
	18	at Texas State (1/10/15)
FOULS	24	at UTA (1/8/15)
	24	at Florida (11/21/14)

### ULM Career Double-Doubles

#### Tylor Ongwae (7)

27 pts, 11 rebs vs. UL-L (1/4/14)  
 27 pts, 10 rebs vs. Ga. State (1/25/14)  
 16 pts, 11 rebs at UL-L (2/1/14)  
 19 pts, 10 rebs vs. NSU (12/9/14)\*  
 15 pts, 10 rebs vs. Troy (1/15/15)\*  
 17 pts, 10 rebs vs. Ga. So. (1/14/15)\*  
 16 pts, 13 rebs vs. USA (1/31/15)\*

#### Majok Deng (5)

14 pts, 10 rebs vs. C. Car (11/26/14)\*  
 14 pts, 11 rebs vs. La. Col (12/6/14)\*  
 11 pts, 11 rebs vs. Cen Bap (12/16/14)\*  
 14 pts, 15 rebs vs. UALR (1/17/15)\*  
 14 pts, 13 rebs at USA (2/26/15)\*

#### Marvin Williams (3)

13 pts, 11 rebs at NSU (11/21/13)  
 11 pts, 13 rebs at ASU (3/6/14)  
 22 pts, 13 rebs at UTA (1/8/15)\*

#### Nick Coppola (1)

12 pts, 12 asts vs. La. Col (12/6/14)\*

#### DeMondre Harvey (1)

12 pts, 10 rebs, vs. NSU (12/9/14)\*

\* indicates this season



# ULM Warhawks Men's Basketball

## University of Louisiana at Monroe



### Opponent - GAME HIGHS

POINTS	74	NORTHWESTERN STATE (12/09/14)
	73	at UTA (1/8/15)
	71	LSUA (12/19/14)
	71	vs Robert Morris (11/27/14)
	70	at ARKANSAS STATE (2/21/15)
FIELD GOALS MADE	29	at ARKANSAS STATE (2/21/15)
	27	LSUA (12/19/14)
FIELD GOAL ATTEMPTS	72	NORTHWESTERN STATE (12/09/14)
	65	LSUA (12/19/14)
FIELD GOAL PERCENTAGE	.490 (24-49)	at APPALACHIAN STATE (2/28/15)
	.453 (29-64)	at ARKANSAS STATE (2/21/15)
3 PT FIELD GOALS MADE	10	NORTHWESTERN STATE (12/09/14)
	9	GEORGIA STATE (02/05/15)
	9	at GEORGIA SOUTHERN (02/07/15)
	9	GEORGIA SOUTHERN (01/24/15)
	9	LSUA (12/19/14)
3 PT FG ATTEMPTS	33	NORTHWESTERN STATE (12/09/14)
	26	at GEORGIA SOUTHERN (02/07/15)
	26	UTA (01/22/15)
	26	LSUA (12/19/14)
3 PT FG PERCENTAGE	.500 (8-16)	TROY (01/15/15)
	.462 (6-13)	vs Robert Morris (11/27/14)
FREE THROWS MADE	24	at Florida (11/21/14)
	23	at UTA (1/8/15)
FREE THROW ATTEMPTS	37	at UTA (1/8/15)
	32	at Florida (11/21/14)
FREE THROW PERCENTAGE	.944 (17-18)	at UL-Lafayette (1/19/15)
	.867 (13-15)	at UAB (11/15/14)
REBOUNDS	49	at Florida (11/21/14)
	45	at New Mexico (12/13/14)
ASSISTS	18	at Georgia State (12/30/14)
	16	at Samford (12/21/14)
	16	NORTHWESTERN STATE (12/09/14)
STEALS	12	vs Robert Morris (11/27/14)
	10	at Texas State (1/10/15)
BLOCKED SHOTS	7	SOUTH ALABAMA (01/31/15)
	7	at New Mexico (12/13/14)
	7	at UAB (11/15/14)
TURNOVERS	24	CHAMPION BAPTIST (11/17/14)
	23	LOUISIANA COLLEGE (12/6/14)
FOULS	22	UALR (01/17/15)
	19	LSUA (12/19/14)



# ULM Warhawks Men's Basketball

## University of Louisiana at Monroe



### In ULM's Last Outing...

#### Georgia State Tops ULM, 58-50

**MONROE, La.** – Junior DeMondre Harvey notched career-highs of 13 points and 15 rebounds, but the ULM men's basketball program fell, 58-50 to Georgia State on Thursday at Fant-Ewing Coliseum.

ULM (19-11, 13-6 SBC) led 41-33 in the second half when GSU (21-9, 14-5 SBC) used a 13-0 run, including 10 straight points from Ryan Harrow to jump ahead. The Panthers were able to hold off the Warhawks in the end as Harrow scored 31 points which included seven three-pointers.

Harvey was a perfect 6-6 from the field. Eight of his 15 boards came on the offensive end. Harvey played 33 minutes, another career-high.

Junior Justin Roberson recorded 11 points, five rebounds and three assists. Sophomore Nick Coppola also reached double-figures with 11 points.

The Panthers came out of the gates on fire and took an early 13-0 lead. ULM responded with a big 14-0 run which included a pair of baskets by both Harvey and Roberson to put ULM ahead, 14-13 with 10:44 left.

The Warhawks extended the lead to 39-30 early in the second half after a jumper by Roberson at the 15:01 mark.

After the Panthers went up 55-47, senior Tylor Ongwae closed out ULM's scoring with a trio of free throws.

Coppola, Ongwae and Deng all played 40 minutes.

#### Official Basketball Box Score -- Game Totals -- Final Statistics Georgia State vs ULM 02/05/15 7:30 PM CST at Fant-Ewing Coliseum; Monroe, Louisiana

##### Georgia State 58 • 21-9, 14-5

#	Player	Total		3-Ptr		Rebounds			PF	TP	A TO Blk Stl				Min
		FG-FGA	FG-FGA	FT-FTA	Off Def Tot	Off Def Tot	PF	TP							
02	Green, Ryann	* 0-3	0-3	2-4	1 1 2	3 2	0 0 0	0	0	19					
22	Hunter, R.J.	* 3-11	2-8	1-3	2 4 6	4 9	9 4 1	2	39						
33	Cridder, Markus	* 2-6	0-0	1-3	1 4 5	2 5	1 2 0	2	38						
42	Washington, Curtis	* 4-4	0-0	1-1	3 4 7	4 9	0 0 2	2	28						
55	Harrow, Ryan	* 11-20	7-13	2-4	1 2 3	1 31	1 2 0	1	37						
00	Ware, Kevin	0-3	0-1	0-0	0 0 0	0 0	0 1 0	0	11						
04	Dennis, Isaiah	0-2	0-0	0-0	2 2 4	0 0	0 0 1	1	13						
15	Brown, Jalen	0-0	0-0	0-0	0 0 0	1 0	0 0 0	0	4						
23	Session, Jordan	0-0	0-0	0-0	0 0 0	1 0	0 0 0	0	1						
31	Shipes, T.J.	0-0	0-0	2-2	0 2 2	1 2	0 0 0	0	10						
Team					0 2 2										
Totals		20-49	9-25	9-17	10 21 31	17 58	11 9 4	8	200						

FG % 1st Half: 10-26 38.5% 2nd half: 10-23 43.5% Game: 20-49 40.8%  
3FG % 1st Half: 5-16 31.3% 2nd half: 4-9 44.4% Game: 9-25 36.0%  
FT % 1st Half: 1-2 50.0% 2nd half: 8-15 53.3% Game: 9-17 52.9%

Deadball  
Rebounds  
3

##### ULM 50 • 19-11, 13-6

#	Player	Total		3-Ptr		Rebounds			PF	TP	A TO Blk Stl				Min
		FG-FGA	FG-FGA	FT-FTA	Off Def Tot	Off Def Tot	PF	TP							
05	Samuel, Jamaal	* 0-0	0-0	0-0	0 2 2	0 0	0 1 0	0	4						
11	Coppola, Nick	* 3-12	1-5	4-4	0 2 2	2 11	2 0 0	1	40						
12	Ongwae, Tylor	* 2-14	0-4	4-7	4 2 6	4 8	4 7 0	1	40						
13	Deng, Majok	* 3-12	1-4	0-1	1 6 7	4 7	0 4 1	0	40						
32	Roberson, Justin	* 4-9	0-1	3-4	4 1 5	3 11	3 1 0	0	37						
02	Harvey, DeMondre	* 6-6	0-0	1-2	8 7 15	1 13	0 0 0	1	33						
04	Foster, Mack	0-2	0-1	0-0	3 2 5	1 0	0 0 0	0	6						
Team					1 1 2										
Totals		18-55	2-15	12-18	21 23 44	15 50	9 13 1	3	200						

FG % 1st Half: 12-25 48.0% 2nd half: 6-30 20.0% Game: 18-55 32.7%  
3FG % 1st Half: 2-5 40.0% 2nd half: 0-10 0.0% Game: 2-15 13.3%  
FT % 1st Half: 3-6 50.0% 2nd half: 9-12 75.0% Game: 12-18 66.7%

Deadball  
Rebounds  
1,1

Officials: R-Hal Lusk, U1-Joey Richard, U2-Sean Casey  
Technical fouls: Georgia State-None. ULM-None.  
Attendance: 2871

Score by periods	1st	2nd	Total
Georgia State	26	32	58
ULM	29	21	50

Points	In	Off	2nd	Fast	Bench
GSU	18	7	3	0	2
ULM	30	6	14	2	13

Score tied - 5 times.  
Lead changed - 6 times.

### The Last Time ULM Played TXST...

#### ULM Hangs On for Big Road Win at Texas State, 62-59

**SAN MARCOS, Texas** – In a game in which the ULM men's basketball program never trailed, the Warhawks jumped out to a 10-point halftime lead and then held off a hot-shooting Texas State squad in the second half for a 62-59 win on Saturday at Strahan Coliseum.

ULM (9-6, 3-1 SBC) held Texas State (9-5, 3-2 SBC) to just 21.4 percent (6-28) in the first half but the Bobcats shot 58.3 percent (14-24) in the second to tie the game five times.

The game was even, 50-50, when senior Tylor Ongwae scored five consecutive points to give ULM a 55-50 edge at the 3:54 mark. A three-pointer by Texas State's Wes Davis made it a 57-55 game with 2:12 left.

The Warhawks were clinging to a 61-59 lead with three seconds remaining when Texas State had the ball underneath ULM's basket. Junior Majok Deng came up with a huge steal on the inbounds play as he intercepted the pass to seal it.

Ongwae was clutch from the free throw line down the stretch and went 9-9 in the game. He finished with 17 points, eight rebounds and a pair of steals.

Senior Marvin Williams led the Warhawks in scoring for the third straight game with 18 points. He was a perfect 9-9 from the field and also grabbed six rebounds. Junior Justin Roberson scored 10 points off the bench.

The Bobcats were led by Emani Gant's 14 points. Ethan Montalvo scored 12 points.

#### Official Basketball Box Score -- Game Totals -- Final Statistics ULM vs Texas State 1/10/15 4:30 p.m. at San Marcos, Texas <Strahan Coliseum>

##### ULM 62 • 9-6, 3-1 SBC

#	Player	Total		3-Ptr		Rebounds			PF	TP	A TO Blk Stl				Min
		FG-FGA	FG-FGA	FT-FTA	Off Def Tot	Off Def Tot	PF	TP							
12	Ongwae, Tylor	f 4-10	0-0	9-9	3 5 8	1 17	2 1 1	2	35						
13	Deng, Majok	f 2-4	2-4	1-2	2 6 8	2 7	2 2 3	2	34						
00	Williams, Marvin	c 9-9	0-0	0-0	3 3 6	2 18	1 5 0	0	31						
04	Foster, Mack	g 1-7	1-6	0-0	0 1 1	2 3	1 1 0	0	29						
11	Coppola, Nick	g 1-5	1-3	0-0	0 4 4	2 3	4 5 0	0	34						
02	Harvey, DeMondre	g 0-1	0-0	0-0	1 0 1	2 0	1 0 1	0	9						
03	Cooper, Prince	1-1	0-0	0-0	0 2 2	0 2	1 0 0	0	5						
05	Samuel, Jamaal	1-3	0-2	0-0	0 1 1	2 2	0 1 0	0	6						
32	Roberson, Justin	5-9	0-1	0-0	0 2 2	5 10	2 3 0	4	17						
Team					2 0 2										
Totals		24-49	4-16	10-11	11 24 35	18 62	14 18 5	8	200						

FG % 1st Half: 13-28 46.4% 2nd half: 11-21 52.4% Game: 24-49 49.0%  
3FG % 1st Half: 3-11 27.3% 2nd half: 1-5 20.0% Game: 4-16 25.0%  
FT % 1st Half: 2-2 100.0 2nd half: 8-9 88.9% Game: 10-11 90.9%

Deadball  
Rebounds  
1

##### Texas State 59 • 9-5, 3-2 SBC

#	Player	Total		3-Ptr		Rebounds			PF	TP	A TO Blk Stl				Min
		FG-FGA	FG-FGA	FT-FTA	Off Def Tot	Off Def Tot	PF	TP							
11	Tilbury, Kevin	f 2-10	0-2	3-4	3 1 4	1 7	0 1 0	1	19						
21	Gant, Emani	f 7-14	0-0	0-0	0 4 4	3 14	2 3 0	0	32						
24	Naylor, Cameron	f 3-9	0-0	2-2	1 1 2	1 8	0 1 1	0	27						
00	Brown, D.J.	g 1-3	0-2	0-0	0 2 2	1 2	3 1 0	0	28						
10	Davis, Wes	g 2-5	1-3	2-4	1 2 3	2 7	0 2 0	7	36						
05	Black, Ojai	0-0	0-0	0-0	0 2 2	0 0	1 1 0	1	13						
15	Montalvo, Ethan	3-7	2-5	4-4	0 1 1	1 12	0 1 0	1	21						
22	Bermudez, Victor	2-2	1-1	0-0	0 0 0	1 5	0 1 0	0	7						
23	Weatherspoon, J.	0-2	0-0	4-4	1 0 1	3 4	0 1 0	0	10						
32	Ramlal, Kendell	0-0	0-0	0-0	1 2 3	0 0	0 0 0	0	9						
Team					1 2 3										
Totals		20-52	4-13	15-18	8 17 25	13 59	6 12 1	10	202						

FG % 1st Half: 6-28 21.4% 2nd half: 14-24 58.3% Game: 20-52 38.5%  
3FG % 1st Half: 2-9 22.2% 2nd half: 2-4 50.0% Game: 4-13 30.8%  
FT % 1st Half: 7-10 70.0% 2nd half: 8-8 100.0 Game: 15-18 83.3%

Deadball  
Rebounds  
0

Officials: Jeremy Mosier, Frankie Bordeaux, Mitchell Ervin  
Technical fouls: ULM-None. Texas State-None.  
Attendance: 1612

Score by periods	1st	2nd	Total
ULM	31	31	62
Texas State	21	38	59

Points	In	Off	2nd	Fast	Bench
ULM	26	14	13	2	14
TXST	22	16	4	6	21

Last FG - ULM 2nd-01:22, TXST 2nd-00:03.  
Largest lead - ULM by 14 1st-04:28, TXST None.  
ULM led for 35:16, TXST led for 00:00. Game was tied for 04:44.

Score tied - 5 times.  
Lead changed - 0 times.





# ULM Warhawks Men's Basketball

## University of Louisiana at Monroe



### The Last Time ULM...

Scored 100 or more points  
 Scored 90 or more points  
 Scored 80 or more points  
 Scored fewer than 40 points  
 Held an opponent to under 50 points  
 Held an opponent to under 40 points  
 Won by 30 or more points  
 Won by 40 or more points  
 Won by 50 or more points  
 Won by 60 or more points  
 Had four double-digit scorers  
 Had five double-digit scorers  
 Had no double-digit scorers  
 Had 20 or more assists  
 Had fewer than 10 assists  
 Had 10 or more blocks  
 Had 10 or more steals  
 Had 25 or more turnovers  
 Had fewer than 10 turnovers  
 Made 30 or more field goals  
 Made 40 or more field goals  
 Made 50 or more field goals  
 Shot over 60 pct from field  
 Shot less than 20 pct from field  
 Made 10 or more 3-pointers  
 Made 15 or more 3-pointers  
 Shot over 50 pct from 3FG  
 Shot over 60 pct from 3FG  
 Shot less than 20 pct from 3FG  
 Made 20 or more free throws  
 Made 30 or more free throws  
 Shot 80-90 pct free throws  
 Shot over 90 pct free throws  
 Won on a buzzer beater  
 Lost on a buzzer beater  
 Won on the last possession  
 Lost on the last possession  
 Won in overtime  
 Won in double overtime  
 Won in triple overtime  
 Had two double-doubles in one game  
 Had two 20+ scorers in one game

106, vs. Champion Baptist (11/17/14)  
 106, vs. Champion Baptist (11/17/14)  
 82, vs. Northwestern State (12/9/14)  
 36, vs. Texas State (1/11/2014)  
 39, vs. Champion Baptist (11/17/14)  
 39, vs. Champion Baptist (11/17/14)  
 67, vs. Champion Baptist (11/17/14)  
 67, vs. Champion Baptist (11/17/14)  
 67, vs. Champion Baptist (11/17/14)  
 67, vs. Champion Baptist (11/17/14)  
 4, at UALR (2/5/15)  
 5, vs. UALR (1/17/15)  
 at Georgia State (12/30/14)  
 20, vs. Northwestern State (12/9/14)  
 9, vs. Georgia State (3/5/15)  
 10, vs. Champion Baptist (11/17/14)  
 12, vs. Louisiana College (12/6/14)  
 29, at Northwestern State (11/21/13)  
 9, at South Alabama (2/26/15)  
 30, at UALR (2/5/15)  
 41, vs. Champion Baptist (11/17/14)  
 51, vs. Georgia Southern (2/8/79)  
 .620 (31-50), at Nicholls State (11/28/11)  
 .185 (10-54) at No. 3 Ohio State (12/27/13)  
 10, at Georgia Southern (2/7/15)  
 15, vs. Middle Tennessee (1/24/08)  
 .509 (27-53), vs. Appalachian State (2/14/15)  
 .643 (9-14), at Troy (1/16/14)  
 .133 (2-15), vs. Georgia State (3/5/15)  
 24, vs. UL-Lafayette (1/4/14)  
 30, vs. Troy (12/31/09)  
 .833 (5-6), at Arkansas State (2/21/15)  
 .923 (12-13), at UALR (2/5/15)  
 W, 60-58, vs. SFA (Malcolm Thomas Jumper) (11/25/08)  
 L, 76-73, at La. Tech (Kyle Gibson 3FG) (12/2/09)  
 W, 66-65, at UALR (Pair of defensive stands) (3/10/14)  
 L, 70-68, at Arkansas State (Frederic Dure lay-up, 5.6 secs) (2/21/15)  
 W, 71-68 (OT), at Georgia Southern (2/7/15)  
 W, 103-98 (2OT), vs. UL-Lafayette (1/4/2014)  
 W, 107-106 (3OT), at La. Tech (1/5/1970)  
 Tylor Ongwae & DeMondre Harvey, vs. Northwestern State (12/9/14)  
 Tylor Ongwae & Majok Deng (21 apiece), at UALR (2/5/15)

### A ULM Player...

Had a double-double (pts-rbs)  
 Had a double-double (pts-asts)  
 Had a triple-double  
 Had 20 points or more  
 Had 30 points or more  
 Had 40 points or more  
 Had 50 points or more  
 Made 10 or more field goals  
 Made 15 or more field goals  
 Made five or more 3FG  
 Made 10 or more FT  
 Had 10 or more rebounds  
 Had 15 or more rebounds  
 Had 20 or more rebounds  
 Had 25 or more rebounds  
 Had 30 or more rebounds  
 Had 10 or more assists  
 Had 15 or more assists  
 Had five or more steals  
 Had 10 or more steals  
 Had five or more blocks  
 Had 10 or more blocks  
 Played 40 minutes or more

DeMondre Harvey (13 pts, 15 rebs), vs. Georgia State (3/5/15)  
 Nick Coppola (12 pts, 12 asts), vs. Louisiana College (12/6/14)  
 Wojciech Mydra (11 pts, 10 rebs, 10 blks), vs. SHSU (1/24/02)  
 Tylor Ongwae (20), at Arkansas State (2/21/15)  
 Amos Olatayo (30), at Northwestern State (11/21/13)  
 Henry Steele (40), vs. Louisiana College (1/23/71)  
 Glynn Saulters (51), vs. Nicholls State (1/1/68)  
 Tylor Ongwae (10), vs. Central Baptist (12/16/14)  
 Mike Smith (15), vs. Houston (12/15/99)  
 Nick Coppola (5), at Arkansas State (2/21/15)  
 Tylor Ongwae (10-11), vs. South Alabama (1/31/15)  
 DeMondre Harvey (15) vs. Georgia State (3/5/15)  
 DeMondre Harvey (15), vs. Georgia State (3/5/15)  
 DeAndre Alexander (20), vs. Lamar (3/2/05)  
 Calvin Natt (25), vs. Miss. State (12/5/78)  
 Calvin Natt (31) vs. Georgia Southern (12/29/76)  
 Nick Coppola (12), vs. Louisiana College (12/6/14)  
 Jayon James (15), at FIU (2/2/13)  
 Tylor Ongwae (5), vs. UALR (2/15/14)  
 Arthur Hayes (10), vs. McNeese State (1983)  
 Jayon James (5), vs. UALR (2/15/14)  
 Wojciech Mydra (13), vs. UTSA (3/2/02)  
 Nick Coppola/Majok Deng/Tylor Ongwae, vs. Georgia State (3/5/15)

### MISCELLANEOUS STATS 2014-15

#### Largest halftime lead

35 (53-18), vs. Champion Baptist (11/17/14)

#### Largest halftime deficit

15 (34-19), at Appalachian St. (2/28/15)

#### Largest halftime lead surrendered in a loss

3, vs. Georgia State (two times)

#### Largest halftime deficit overcome in a win

10 (31-21), at Troy (1/29/15)

#### Largest lead any time

67 (106-39), vs. Champion Baptist (11/17/14)

#### Largest deficit any time

23, (66-43), at Appalachian St. (2/28/15)

#### Largest lead surrendered in a loss

12, at No. 8 Florida (11/21/14)

#### Largest deficit overcome in a win

13, two times (at UTA/at Troy)

#### Most points scored in a half

53, vs. Champion Baptist (11/17/14)

#### Fewest points scored in a half

19, three times

#### Most points allowed in a half

44, two times (vs. NSU/LSUA)

#### Fewest points allowed in a half

18, two times (vs. Ch. Bapt/vs. USA)

#### Largest Rebounding Advantage

+27 (48-21), vs. Champion Baptist (11/17/14)

#### Largest Rebounding Disadvantage

-13 (49-36), at No. 8 Florida (11/21/14)

#### Highest Plus Turnover Differential

+13 (24-11), vs. Champion Baptist (11/17/14)

#### Highest Minus Turnover Differential

-11 (15-4), vs. NSU (12/9/14)

#### Most 3FG Made In a Game

10, at Georgia Southern (2/7/15)

#### Most 3FG Allowed in a Game

10, vs. NSU (12/9/14)



# ULM Warhawks Men's Basketball

## University of Louisiana at Monroe



### 0 Marvin Williams

Senior | Center | 6-8 | 245  
Memphis, Tenn. | NW Florida State College

	Season-High	Career-High
Pts	22, two times	22, two times
FG	9, two times	9, two times
3FG	1, at Florida (11/22/14)	1, two times
FT	6, at UTA (1/8/15)	6, at UTA (1/8/15)
Ast	2, vs. GaSo (1/24/15)	2, four times
Reb	13, at UTA (1/8/15)	13, two times
Blocks	3, two times	4, vs. UALR (2/15/14)
Steals	2, vs. CHBC (11/17/14)	2, vs. CHBC (11/17/14)
Min	36, vs. RMU (11/27/14)	36, vs. RMU (11/27/14)



### 2 DeMondre Harvey

Junior | Forward | 6-7 | 210  
Minden, La. | Pearl River CC

	Season-High	Career-High
Pts	13, vs. GSU (3/5/15)	13, vs. GSU (3/5/15)
FG	6, two times	6, two times
3FG	N/A	N/A
FT	5, vs. LSU (12/19/14)	5, vs. LSU (12/19/14)
Ast	3, vs. ASU (1/5/15)	3, vs. ASU (1/5/15)
Reb	15, vs. GSU (3/5/15)	15, vs. GSU (3/5/15)
Blocks	3, vs. CHBC (11/17/14)	3, vs. CHBC (11/17/14)
Steals	1, five times	3, vs. ASU (3/1/14)
Min	33, vs. GSU (3/5/15)	33, vs. GSU (3/5/15)

Opp	GS	Min	FG-FGA/Pct.	3FG-FGA	FT-FTA/PCT	O-D-T	PF-FO	A	TO	Bk	Stl	Pts/Avg
UAB	*	16	1-5/200	0-1/000	1-1/1.000	0-0-0	3-0	0	0	0	1	3/3.0
CH BAP	*	18	3-3/1.000	0-0/000	5-8/625	1-3-4	2-0	1	1	0	2	11/7.0
Florida	*	27	3-11/273	1-1/1.000	0-0/000	3-1-4	2-0	0	1	2	0	7/7.0
C. Car	*	6	0-1/000	0-1/000	0-0/000	0-2-2	4-0	0	2	0	0	0/5.3
RMU	*	36	6-11/545	0-0/000	2-5/400	2-3-5	3-0	1	1	3	1	14/7.0
La. Col	*	10	1-1/1.000	0-0/000	0-0/000	0-3-3	1-0	0	1	0	0	2/6.2
NSU	*	9	1-1/1.000	0-0/000	0-0/000	0-2-2	2-0	0	2	1	0	2/5.6
N.M.	*	18	2-4/500	0-0/000	2-2/1.000	3-2-5	2-0	0	2	2	0	6/5.6
CE BAP					DNP							
LSU-A	*	22	4-7/571	0-0/000	2-6/333	2-2-4	1-0	0	0	2	0	10/6.1
Samford	*	16	2-4/500	0-0/000	0-0/000	2-2-4	4-0	1	1	0	0	4/5.9
Ga. St.	*	17	1-3/333	0-0/000	5-6/833	2-4-6	2-0	1	3	0	0	7/6.0
Ark. St.	*	33	9-12/750	0-0/000	4-5/800	3-4-7	1-0	1	2	0	0	22/7.3
UTA	*	32	8-12/667	0-0/000	6-6/1.000	6-7-13	2-0	0	2	2	0	22/8.5
TXST	*	31	9-9/1.000	0-0/000	0-0/000	3-3-6	2-0	1	5	0	0	18/9.1
Troy	*	24	4-7/571	0-0/000	0-0/000	1-5-6	3-0	0	3	3	0	8/9.1
UALR	*	23	5-8/625	0-0/000	0-2/000	1-3-4	5-1	0	2	1	0	10/9.1
UL-L	*	31	3-8/375	0-0/000	0-3/000	3-4-7	4-0	0	2	1	2	6/8.9
UTA	*	28	6-6/1.000	0-0/000	5-6/833	2-6-8	0-0	0	0	1	1	17/9.4
Ga. So.	*	35	1-4/250	0-0/000	0-1/000	1-0-1	2-0	2	3	0	1	2/9.0
Troy	*	19	2-5/400	0-0/000	0-0/000	0-3-3	1-0	1	1	0	0	4/8.8
USA	*	23	2-7/286	0-0/000	0-0/000	1-3-4	3-0	1	1	1	1	4/8.5
UALR					DNP							
Ga. So.					DNP							
UL-L					DNP							
App. St.					DNP							
Ark. St.					DNP							
USA					DNP							
App. St.					DNP							
Ga. St.					DNP							
TXST					DNP							
TBA												
<b>Totals</b>	<b>16</b>	<b>474</b>	<b>73-129/566</b>	<b>1-3/333</b>	<b>32-51/627</b>	<b>36-62-98</b>	<b>49-1</b>	<b>10</b>	<b>35</b>	<b>19</b>	<b>9</b>	<b>179/8.5</b>

Opp	GS	Min	FG-FGA/Pct.	3FG-FGA	FT-FTA/PCT	O-D-T	PF-FO	A	TO	Bk	Stl	Pts/Avg
UAB		22	2-7/286	0-0/000	1-2/500	3-2-5	0-0	0	1	0	0	5/5.0
CH BAP		21	2-3/667	0-0/000	2-3/667	6-3-9	1-0	0	1	3	0	9/7.0
Florida		6	0-0/000	0-0/000	0-0/000	0-0-0	1-0	0	0	0	0	0/4.7
C. Car		15	0-1/000	0-0/000	0-0/000	1-0-1	1-0	0	0	0	0	0/3.5
RMU		1	0-0/000	0-0/000	0-0/000	0-0-0	0-0	0	0	0	0	0/2.2
La. Col	*	30	4-7/571	0-0/000	0-0/000	2-7-9	1-0	2	3	1	1	8/3.2
NSU	*	30	6-6/1.000	0-0/000	0-0/000	1-9-10	1-0	1	2	2	0	12/4.4
N.M.		10	0-0/000	0-0/000	0-0/000	1-0-1	3-0	1	1	1	0	0/3.9
CE BAP		25	4-7/571	0-0/000	0-0/000	4-4-8	3-0	0	0	0	0	8/4.3
LSU-A	*	16	1-1/1.000	0-0/000	5-5/1.000	0-2-2	0-0	0	1	0	1	7/4.6
Samford	*	14	3-4/750	0-0/000	0-3/000	2-1-3	1-0	0	0	0	0	6/4.7
Ga. St.	*	20	1-4/250	0-0/000	1-2/500	2-2-4	1-0	0	0	0	0	3/4.6
Ark. St.		13	2-2/1.000	0-0/000	0-1/000	1-3-4	2-0	3	1	0	0	4/4.5
UTA		7	1-2/500	0-0/000	0-0/000	0-1-1	1-0	0	1	0	1	2/4.4
TXST		9	0-1/000	0-0/000	0-0/000	1-0-1	2-0	1	0	1	0	0/4.1
Troy		16	1-1/1.000	0-0/000	0-0/000	0-1-1	0-0	1	0	0	1	2/3.9
UALR		14	0-0/000	0-0/000	0-2/000	0-0-0	2-0	0	0	0	0	0/3.7
UL-L		3	0-0/000	0-0/000	0-0/000	0-0-0	1-0	0	0	0	0	0/3.5
UTA		5	0-0/000	0-0/000	4-5/800	1-0-1	0-0	0	0	0	0	4/3.5
Ga. So.		4	0-0/000	0-0/000	0-0/000	0-0-0	1-0	0	1	0	0	0/3.4
Troy		5	0-0/000	0-0/000	0-0/000	1-3-4	0-0	0	0	0	0	0/3.2
USA		8	0-3/000	0-0/000	0-0/000	2-1-3	0-0	0	0	0	0	0/3.0
UALR		4	0-0/000	0-0/000	0-0/000	0-0-0	0-0	0	0	0	0	0/2.9
Ga. So.		19	2-4/500	0-0/000	0-0/000	1-4-5	2-0	0	1	0	0	4/3.0
UL-L		9	0-0/000	0-0/000	0-0/000	0-0-0	0-0	0	1	1	0	0/2.8
App. St.		26	2-4/500	0-0/000	3-6/500	2-6-8	2-0	1	1	1	0	7/3.0
Ark. St.		15	1-3/333	0-0/000	1-1/1.000	2-2-4	1-0	1	0	0	0	3/3.0
USA		25	3-3/1.000	0-0/000	3-4/750	3-3-6	3-0	0	1	0	1	9/3.2
App. St.		17	1-1/1.000	0-0/000	0-1/000	0-2-2	0-0	1	0	1	0	2/3.2
Ga. St.		33	6-6/1.000	0-0/000	1-2/500	8-7-15	1-0	0	0	0	1	13/3.5
TXST												
TBA												
<b>Totals</b>	<b>5</b>	<b>442</b>	<b>42-70/600</b>	<b>0-0/000</b>	<b>21-37/568</b>	<b>44-63-107</b>	<b>31-0</b>	<b>12</b>	<b>16</b>	<b>11</b>	<b>6</b>	<b>105/3.5</b>

#### 2014-15 (SENIOR)

Posted game-highs of 17 points and eight rebounds vs. UTA... won SBC and Co-LSWA Player of the Week on Jan. 12 after leading the team to a 3-0 record and going 26-33 (.798) FG with 20.7 ppg and 8.7 rpg... came up huge with 18 points on 9-9 shooting at Texas State... matched career-highs of 22 points and 13 rebounds in a big 76-73 overtime win over UTA and had eight of ULM's nine points in overtime and was a perfect 6-6 from the free throw line... dominating career-high performance of 22 points and nine made field goals in the win over Arkansas State and also grabbed seven rebounds... put in 10 points in a win over UALR at home... registered 14 points, six field goals made and 36 minutes in the Battle 4 Atlantis against Robert Morris... grabbed a season-high six rebounds at Georgia State... tallied 11 points on a perfect 3-for-3 from the field, grabbed four rebounds and set a career-high two steals in a win over Champion Baptist... scored 10 points with four rebounds and a pair of blocks in a victory over LSU-A

#### 2013-14 (JUNIOR)

Tallied a pair of double-doubles with 13 points and 10 rebounds at Northwestern State and 11 points and 13 rebounds at Arkansas State... led the team with 23 blocks, finishing top-10 in the SBC... averaged 8.5 points and 4.8 rebounds per game... shot 48.6 percent from the field (89-183) which was top-15 in the league... grabbed 2.1 offensive rebounds per game in conference play, eighth-best in the league... posted nine double-figure scoring games on the season including a career-high 19 points at No. 5 Kansas to outscore Preseason Player of the Year Andrew Wiggins... the 13 rebounds against the Red Wolves were the most by a Warhawk in a single-game on the season... turned in 14 points and nine rebounds against UT Arlington at the SBC Championships... rejected a career-high four blocks at home against UALR

#### 2014-15 (JUNIOR)

Notched a career performance with 13 points and 15 rebounds in 33 minutes against Georgia State... registered nine points at South Alabama... recorded seven points, eight rebounds and 26 minutes vs. Appalachian State... posted a big outing against Northwestern State with a double-double and personal bests of 12 points and 10 rebounds in the win; played 30 minutes after getting the start... also earned the start and logged 30 minutes against Louisiana College; recorded eight points and nine rebounds in the contest... solid performance of nine points, nine rebounds and three blocks in the win over Champion Baptist

#### 2013-14 (SOPHOMORE)

Led the team in field goal percentage with a .531 mark (34-64)... registered a career-high 11 points on four made field goals against Thomas... grabbed a career-high eight rebounds at both Ole Miss and UALR... played a career-high 25 minutes at home against WKU... career-high three steals at home against Troy... recorded 13 blocks and 13 steals on the season... made four starts and played in all 27 contests... averaged 3.1 points and 3.4 rebounds per game... led the team in rebounding in four games and in blocks in six games

#### PREVIOUS SCHOOL

Played at Pearl River Junior College in Poplarville, Miss. and averaged 6.4 points and 5.8 rebounds per game... Played in all 25 games and made 15 starts... Registered three double-doubles including 14 points and 11 rebounds in the final game of the season on March 8... Tallied a career-high 15 points and four blocks against Holmes Community College on Nov. 5... Shot 60.0 percent from the field on the season and 60.6 percent from the free throw line... Will have three years of eligibility remaining at ULM



# ULM Warhawks Men's Basketball

## University of Louisiana at Monroe



### 3 Prince Cooper

Sophomore | Guard | 6-4 | 215  
Freeport, Bahamas | Miami-Dade College

	Season-High	Career-High
Pts	3, vs. CHBC (11/17/14)	3, vs. CHBC (11/17/14)
FG	1, eight times	1, eight times
3FG	N/A	N/A
FT	1, vs. CHBC (11/17/14)	1, vs. CHBC (11/17/14)
Ast	3, vs. CHBC (11/17/14)	3, vs. CHBC (11/17/14)
Reb	5, vs. CHBC (11/17/14)	5, vs. CHBC (11/17/14)
Blocks	1, vs. CHBC (11/17/14)	1, vs. CHBC (11/17/14)
Steals	1, three times	1, three times
Min	24, vs. CHBC (11/17/14)	24, vs. CHBC (11/17/14)

Opp	GS	Min	FG-FGA/Pct.	3FG-FGA	FT-FTA/PCT	O-D-T	PF-FO	A	TO	Blk	Stl	Pts/Avg
UAB	5	0-1/.000	0-0/.000	0-0/.000	1-0-1	0-0	0	0	0	0	0	0/0.0
CH BAP	24	1-6/.167	0-0/.000	1-2/.500	2-3-5	1-0	3	2	1	1	3	3/1.5
Florida	6	1-2/.500	0-0/.000	0-0/.000	1-3-4	0-0	0	0	0	0	0	2/1.7
C. Car	12	1-1/1.000	0-0/.000	0-0/.000	0-2-2	0-0	1	1	0	0	0	2/1.8
RMU	8	0-0/.000	0-0/.000	0-0/.000	1-0-1	0-0	0	0	0	0	0	0/1.4
La. Col				DNP								
NSU				DNP								
N.M.	1	0-0/.000	0-0/.000	0-0/.000	0-0-0	0-0	0	0	0	0	0	0/1.2
CE BAP	7	0-1/.000	0-0/.000	0-2/.000	0-0-0	0-0	1	1	0	0	0	0/1.0
LSU-A				DNP								
Samford				DNP								
Ga. St.	18	1-2/.500	0-0/.000	0-2/.000	0-1-1	0-0	2	2	0	1	2	2/1.1
Ark. St.	4	1-1/1.000	0-0/.000	0-0/.000	1-0-1	0-0	0	0	0	0	0	2/1.2
UTA	8	1-1/1.000	0-0/.000	0-0/.000	0-1-1	2-0	0	0	0	0	0	2/1.3
TXST	5	1-1/1.000	0-0/.000	0-0/.000	0-2-2	0-0	1	0	0	0	0	2/1.4
Troy	5	0-0/.000	0-0/.000	0-0/.000	0-0-0	0-0	1	0	0	0	0	0/1.3
UALR				DNP								
UL-L	6	0-0/.000	0-0/.000	0-0/.000	0-0-0	0-0	0	0	0	0	0	0/1.2
UTA	2	0-0/.000	0-0/.000	0-2/.000	0-1-1	2-0	0	2	0	0	0	0/1.1
Ga. So.				DNP								
Troy				DNP								
USA				DNP								
UALR	1	0-0/.000	0-0/.000	0-0/.000	0-0-0	0-0	0	0	0	0	0	0/1.0
Ga. So.				DNP								
UL-L				DNP								
App. St.				DNP								
Ark. St.				DNP								
USA	1	0-0/.000	0-0/.000	0-0/.000	0-0-0	0-0	0	0	0	0	0	0/0.9
App. St.	3	1-1/1.000	0-0/.000	0-1/.000	1-0-1	1-0	0	0	0	1	2	2/1.0
Ga. St.				DNP								
TXST												
TBA												
Totals	116	8-17/.471	0-0/.000	1-9/.111	7-13-.20	6-0	9	8	1	3	17/1.0	

#### 2014-15 (SOPHOMORE)

Set nearly every career high in a win against Champion Baptist including five rebounds and three assists in 24 minutes... hit a mid-range jumpers in conference against Georgia State, Arkansas State, UT Arlington and Texas State... made a strong move to the bucket, scored and got fouled at Appalachian State

#### PREVIOUS SCHOOL

Played one season at Miami-Dade JC (Fla.)... averaged 10.4 points, 6.4 rebounds and 2.1 assists per game... shot an astounding 83 percent from the field... earned Dean's List honors for his achievements in the classroom

#### HIGH SCHOOL

Lettered in both basketball and track & field at Piney Woods HS (Miss.)... averaged 12 points, eight rebounds and three assists per game... named team captain as a senior... state champion in the triple jump (track & field)... earned academic honor roll and the highest chemistry and algebra II award... graduated top-15 in his class



### 4 Mack Foster

Junior | Guard | 6-2 | 185  
Beulah, Miss. | East Mississippi CC

	Season-High	Career-High
Pts	15, at Troy (1/29/15)	15, at Troy (1/29/15)
FG	5, three times	5, three times
3FG	3, three times	3, three times
FT	2, four times	2, four times
Ast	3, two times	3, two times
Reb	4, two times	4, two times
Blocks	1, five times	1, five times
Steals	4, vs. LC (12/6/14)	4, vs. LC (12/6/14)
Min	34, vs. App (2/14/15)	34, vs. App (2/14/15)

Opp	GS	Min	FG-FGA/Pct.	3FG-FGA	FT-FTA/PCT	O-D-T	PF-FO	A	TO	Blk	Stl	Pts/Avg
UAB	7	0-2/0.00	0-2/0.00	0-0/0.00	0-0-0	1-0	0	0	1	0	0	0/0.0
CH BAP	24	5-9/.556	3-6/.500	0-0/0.00	1-1-2	2-0	3	1	1	3	13/7.5	
Florida	18	1-4/.250	1-2/.500	0-0/0.00	0-0-0	4-0	2	0	0	3	3/5.3	
C. Car	11	3-4/.750	0-1/0.00	0-2/0.00	2-0-2	0-0	1	0	0	0	6/5.5	
RMU	14	3-4/.750	0-1/0.00	0-2/0.00	1-0-1	1-0	3	0	0	0	6/5.6	
La. Col	18	3-5/.600	0-0/0.00	2-2/1.000	0-1-1	2-0	2	0	0	4	8/6.0	
NSU	14	1-6/.167	0-1/0.00	0-0/0.00	0-0-0	1-0	1	1	0	0	2/5.4	
N.M.	18	2-4/.500	1-2/.500	0-0/0.00	2-1-3	0-0	1	1	0	0	5/5.4	
CE BAP	11	0-3/0.00	0-1/0.00	0-0/0.00	0-3-3	2-0	0	1	0	0	0/4.8	
LSU-A	12	2-3/.667	1-1/1.000	0-0/0.00	0-0-0	2-0	1	1	0	0	5/4.8	
Samford	13	0-2/0.00	0-1/0.00	0-0/0.00	0-1-1	2-0	1	0	1	0	0/4.5	
Ga. St.	14	2-5/.400	1-3/.333	2-2/1.000	0-1-1	0-0	1	0	0	0	7/4.6	
Ark. St.	*	22	2-5/.400	0-2/0.00	0-0/0.00	0-2-2	1-0	0	1	0	1	4/4.5
UTA	*	28	4-9/.444	3-8/.375	0-1/0.00	0-4-4	5-1	2	1	0	0	11/5.0
TXST	*	29	1-7/.143	1-6/.167	0-0/0.00	0-1-1	2-0	1	1	0	0	3/4.9
Troy	*	21	2-7/.286	0-2/0.00	2-2/1.000	1-2-3	1-0	2	0	1	0	6/4.9
UALR	*	18	0-4/0.00	0-2/0.00	0-2/0.00	0-0-0	2-0	0	1	0	1	0/4.6
UL-L	*	14	2-9/.222	0-3/0.00	2-2/1.000	1-3-4	0-0	0	2	0	1	6/4.7
UTA	*	20	2-3/.667	1-2/.500	0-0/0.00	0-3-3	2-0	2	1	0	1	5/4.7
Ga. So.	*	27	3-6/.500	0-3/0.00	0-2/0.00	0-2-2	2-0	2	2	0	0	6/4.8
Troy		33	5-10/.500	3-6/.500	2-2/1.000	1-3-4	1-0	1	0	0	1	15/5.3
USA		20	1-3/.333	0-1/0.00	0-0/0.00	1-1-2	2-0	0	0	0	0	2/5.1
UALR		16	0-0/0.00	0-0/0.00	0-0/0.00	0-3-3	2-0	0	2	0	0	0/4.9
Ga. So.		27	5-8/.625	2-3/.667	0-2/0.00	1-0-1	2-0	1	0	0	1	12/5.2
UL-L		19	1-3/.333	0-1/0.00	2-3/.667	0-0-0	2-0	2	1	0	1	4/5.2
App. St.		34	3-7/.429	2-3/.667	0-1/0.00	0-3-3	2-0	0	1	1	0	8/5.3
Ark. St.		14	3-7/.429	0-2/0.00	1-1/1.000	0-1-1	2-0	0	3	0	1	7/5.3
USA		10	2-2/0.00	0-0/0.00	0-0/0.00	1-0-1	0-0	0	0	0	0	4/5.3
App. St.		14	0-3/0.00	0-2/0.00	0-0/0.00	0-0-0	3-0	0	2	0	0	0/5.1
Ga. St.		6	0-2/0.00	0-1/0.00	0-0/0.00	3-2-5	1-0	0	0	0	0	0/4.9
TXST												
TBA												
Totals	8	546	58-146/.397	19-68/.279	13-26/.500	15-38-.53	49-1	29	23	5	18	148/4.9

#### 2014-15 (JUNIOR)

Netted 12 points on five made field goals in an overtime win at Georgia Southern... drained a career-high 15 points and played a career-high 33 minutes in an overtime win at Troy... earned eight consecutive starts including at UT Arlington where he netted 11 points after a trio of three-pointers... ULM went on a six-game winning streak with him starting... became the first Warhawk to register four steals in a game on the season in the win over Louisiana College... shot 3-for-4 from the field in both games of the Battle 4 Atlantis Mainland bracket against Coastal Carolina and Robert Morris... registered a career-high 13 points and hit a trio of three-pointers in 24 minutes in a win over Champion Baptist

#### PREVIOUS SCHOOL

Played two seasons at East Mississippi CC and led the team to the Region 23 championship... guided the team to a No. 11 ranking in the NJCAA National Poll... averaged 7.1 points, 4.0 rebounds and 1.0 steals per game... hit a career-high six three-pointers in a game

#### HIGH SCHOOL

Lettered in both basketball and track & field at West Bolivar HS... named Co-MVP All-State and Best Offensive Player... earned All-Area MVP, First-Team and Best Defensive Player... guided the Eagles to the state championship... averaged 15 points, six rebounds, three steals and two blocks per game... dunked on Johnny O'Bryant III, who was drafted by the Milwaukee Bucks, his freshman year off a put-back





# ULM Warhawks Men's Basketball

## University of Louisiana at Monroe



### 5 Jamaal Samuel

Junior | Forward | 6-9 | 205  
New Orleans, La. | Illinois State

	Season-High	Career-High
Pts	18, vs. CHBC (11/17/14)	18, vs. CHBC (11/17/14)
FG	8, at UALR (2/5/15)	8, at UALR (2/5/15)
3FG	3, four times	3, four times
FT	4, vs. NSU (12/9/14)	4, vs. NSU (12/9/14)
Ast	2, two times	2, three times
Reb	7, vs. NSU (12/9/14)	8, vs. Bradley (2/15/14)
Blocks	4, vs. C. Carolina (11/26/14)	4, two times
Steals	2, three times	2, three times
Min	33, at UALR (2/5/15)	at UALR (2/5/15)

Opp	GS	Min	FG-FGA/Pct.	3FG-FGA	FT-FTA/PCT	O-D-T	PF-FO	A	TO	Blk	Stl	Pts/Avg
UAB		17	1-4/.250	1-3/.333	0-0/.000	0-2-2	3-0	2	2	0	1	3/3.0
CH BAP		20	7-12/.583	3-6/.500	1-2/.500	1-5-6	1-0	0	2	2	0	18/10.5
Florida		22	3-10/.300	3-10/.300	0-0/.000	1-5-6	3-0	0	1	0	1	9/10.0
C. Car		23	1-4/.250	1-4/.250	0-0/.000	0-2-2	2-0	1	1	4	1	3/8.3
RMU		14	1-5/.200	1-4/.250	1-2/.500	0-5-5	2-0	1	4	0	1	4/7.4
La. Col		11	1-6/.167	0-1/.000	0-0/.000	2-0-2	2-0	0	0	1	0	2/6.5
NSU		14	4-8/.500	0-0/.000	4-5/.800	3-4-7	3-0	0	0	3	0	12/7.3
N.M.		27	2-7/.286	0-4/.000	2-2/1.000	0-2-2	0-0	0	0	0	2	6/7.1
CE BAP	*	21	1-5/.200	0-1/.000	1-2/.500	0-2-2	2-0	0	2	2	2	3/6.7
LSU-A		21	4-6/.667	0-2/.000	0-0/.000	2-3-5	1-0	1	2	1	0	8/6.8
Samford		25	5-8/.625	2-2/1.000	1-2/.500	0-6-6	4-0	0	1	1	0	13/7.4
Ga. St.	*	26	4-12/.333	1-4/.250	0-1/.000	0-5-5	0-0	2	1	0	0	9/7.5
Ark. St.		13	2-7/.286	1-4/.250	0-0/.000	0-0-0	0-0	0	0	1	0	5/7.3
UTA		12	1-8/.125	1-5/.200	0-0/.000	0-4-4	0-0	0	0	0	0	3/7.0
TXST		6	1-3/.333	0-2/.000	0-0/.000	0-1-1	2-0	0	1	0	0	2/6.7
Troy		12	2-4/.500	0-2/.000	0-0/.000	2-3-5	3-0	0	1	0	0	4/6.5
UALR		7	0-1/.000	0-1/.000	0-0/.000	0-2-2	1-0	0	1	0	0	0/6.1
UL-L		18	3-5/.600	3-4/.750	0-0/.000	0-0-0	2-0	0	1	0	1	9/6.3
UTA		13	0-3/.000	0-2/.000	0-0/.000	0-3-3	0-0	0	1	2	0	0/5.9
Ga. So.		9	3-7/.429	0-1/.000	0-0/.000	1-1-2	1-0	1	0	1	0	6/6.0
Troy		13	1-3/.333	1-3/.333	0-0/.000	1-1-2	1-0	0	0	1	0	3/5.8
USA		9	2-3/.667	0-0/.000	0-0/.000	0-0-0	0-0	0	2	0	0	4/5.7
UALR	*	33	8-13/.615	0-1/.000	0-0/.000	1-5-6	5-1	0	1	1	1	16/6.2
Ga. So.	*	28	7-11/.636	3-5/.600	0-0/.000	1-4-5	1-0	1	0	0	2	17/6.6
UL-L	*	24	2-5/.400	0-1/.000	0-0/.000	0-3-3	1-0	1	1	2	0	4/6.5
App. St.	*	18	2-5/.400	1-3/.333	0-2/.000	1-3-4	5-1	1	1	1	0	5/6.5
Ark. St.	*	23	3-8/.375	0-2/.000	0-0/.000	1-3-4	2-0	0	1	3	0	6/6.4
USA	*	16	3-8/.375	1-5/.200	0-0/.000	1-2-3	4-0	0	0	0	0	7/6.5
App. St.	*	22	3-11/.273	1-5/.200	0-0/.000	0-4-4	0-0	0	1	2	0	7/6.5
Ga. St.	*	4	0-0/.000	0-0/.000	0-0/.000	0-2-2	0-0	0	1	0	0	0/6.3
TXST												
TBA												
Totals		10	521	77-192/.401	24-87/.276	10-18/.556	18-80-98	51-2	11	29	28	188/6.3

#### 2014-15 (JUNIOR)

Netted 17 points, one shy of his career-high, at Georgia Southern and hit three long-range shots... drained 16 points on a career-high eight made field goals and also grabbed six rebounds at UALR... hit a trio of long-range shots at UL-Lafayette... netted 13 points including a pair of three-pointers and pulled down six rebounds against Samford... registered 12 points and grabbed a season-high seven rebounds in the win over NSU... set career highs in points (18), field goals made (7) and three-pointers made (3) in a win over Champion Baptist... earned the start against Central Baptist and had a pair of blocks and steals... led the team with nine points at Georgia State

#### 2013-14 (SOPHOMORE) ILLINOIS STATE

Played in 26 games with one start... ranked second on the team and No. 5 in the Missouri Valley Conference with 0.9 blocks per game... netted four points with four rebounds and three blocks in the loss at Southern Illinois (March 1)... grabbed a career-best eight rebounds and scored four points in the win over Bradley (Feb. 15)... blocked a career-best four shots and collected six rebounds in the overtime loss at Evansville (Feb. 12)... netted nine points on 3-for-4 shooting in the loss at Loyola (Feb. 9)... scored a career-high 10 points on a career-best five field goals (5-for-5) in the win over Northern Iowa (Feb. 5)... made his first-career start and scored four points during a career-high 24 minutes in the win over Drake (Feb. 1)... registered the first two blocks of his career in the win over Chicago State (Dec. 4)... scored nine points on 4-for-6 shooting with five rebounds in the loss at No. 14 VCU (Nov. 8)

#### 2012-13 (FRESHMAN) PRIOR TO ILLINOIS STATE

Helped guide South Plains College to a 22-8 overall record and an 11-5 mark in the Western Junior College Athletic Conference (WJCAC) as a freshman in 2012-13... shot 46.7 percent from the field



### 11 Nick Coppola

Sophomore | Guard | 5-11 | 195  
Richmond, Va. | Benedictine Prep

	Season-High	Career-High
Pts	19, at ASU (2/21/15)	19, at ASU (2/21/15)
FG	7, at ASU (2/21/15)	7, at ASU (2/21/15)
3FG	5, at ASU (2/21/15)	5, at ASU (2/21/15)
FT	4, four times	5, at KU (11/8/13)
Ast	12, vs. LC (12/6/14)	12, vs. LC (12/6/14)
Reb	8, vs. ULL (2/12/15)	8, vs. ULL (2/12/15)
Blocks	N/A	N/A
Steals	3, two times	3, two times
Min	45, two times	45, two times

Opp	GS	Min	FG-FGA/Pct.	3FG-FGA	FT-FTA/PCT	O-D-T	PF-FO	A	TO	Blk	Stl	Pts/Avg
UAB	*	33	5-8/.625	3-5/.600	1-2/.500	0-4-4	0-0	6	2	0	1	14/14.0
CH BAP	*	12	2-2/1.000	1-1/1.000	2-4/.500	0-2-2	1-0	4	0	0	1	7/10.5
Florida	*	45	3-10/300	3-5/.600	2-2/1.000	0-1-1	3-0	2	1	0	1	11/10.7
C. Car	*	37	2-9/.222	1-5/.200	0-0/.000	0-1-1	2-0	7	0	0	0	5/9.3
RMU	*	39	2-8/.250	2-6/.333	0-0/.000	1-2-3	2-0	2	2	0	1	6/8.6
La. Col	*	31	6-9/.667	0-2/.000	0-2/.000	0-0-0	1-0	12	4	0	3	12/9.2
NSU	*	40	4-9/.444	2-5/.400	3-4/.750	1-4-5	3-0	6	2	0	2	13/9.7
N.M.	*	29	2-8/.250	1-4/.250	4-4/1.000	0-2-2	5-1	0	1	0	0	9/9.6
CE BAP	*	28	4-5/.800	2-3/.667	2-2/1.000	0-1-1	3-0	2	2	0	2	12/9.9
LSU-A	*	40	5-11/.455	1-4/.250	2-3/.667	0-3-3	1-0	6	1	0	0	13/10.2
Samford	*	37	6-12/.500	3-4/.750	0-0/.000	1-1-2	2-0	2	3	0	0	15/10.6
Ga. St.	*	29	2-4/.500	2-3/.667	0-0/.000	0-4-4	1-0	4	1	0	2	6/10.3
Ark. St.	*	40	1-5/.200	0-1/.000	1-2/.500	0-4-4	2-0	6	1	0	0	3/9.7
UTA	*	42	2-9/.222	0-5/.000	2-5/.400	0-2-2	2-0	7	3	0	1	6/9.4
TXST	*	34	1-5/.200	1-3/.333	0-0/.000	0-4-4	2-0	4	5	0	0	3/9.0
Troy	*	33	1-5/.200	1-4/.250	0-0/.000	0-2-2	1-0	2	3	0	0	3/8.6
UALR	*	40	6-11/.545	1-4/.250	2-2/1.000	0-2-2	0-0	5	2	0	2	15/9.0
UL-L	*	35	3-9/.333	1-4/.250	0-0/.000	0-4-4	1-0	1	1	0	1	7/8.9
UTA	*	34	2-6/.333	1-4/.250	0-0/.000	0-2-2	3-0	3	3	0	2	5/8.7
Ga. So.	*	34	4-11/.364	1-5/.200	1-2/.500	0-6-6	4-0	1	0	0	0	10/8.8
Troy	*	36	2-10/.200	1-7/.143	1-2/.500	0-3-3	2-0	2	0	0	1	6/8.6
USA	*	37	6-9/.667	1-2/.500	2-2/1.000	0-1-1	1-0	3	1	0	3	15/8.9
UALR	*	40	3-6/.500	1-1/1.000	4-4/1.000	1-2-3	3-0	4	3	0	1	11/9.0
Ga. So.	*	45	3-8/.375	3-6/.500	0-0/.000	0-2-2	1-0	4	2	0	0	9/9.0
UL-L	*	40	2-4/.500	2-3/.667	2-3/.667	0-8-8	1-0	5	0	0	0	8/9.0
App. St.	*	40	4-8/.500	1-3/.333	0-0/.000	1-2-3	3-0	5	2	0	0	9/9.0
Ark. St.	*	40	7-10/.700	5-7/.714	0-0/.000	0-5-5	1-0	3	3	0	2	19/9.3
USA	*	40	2-5/.400	1-1/1.000	4-4/1.000	0-4-4	1-0	4	2	1	3	9/9.3
App. St.	*	33	5-12/.417	2-6/.333	0-0/.000	1-1-2	3-0	4	4	0	0	12/9.4
Ga. St.	*	40	3-12/.250	1-5/.200	4-4/1.000	0-2-2	2-0	2	0	0	1	11/9.5
TXST												
TBA												

#### 2014-15 (SOPHOMORE)

Has started at point guard in every game of his career... career performance of 19 points, seven made FGs and five made 3FGs at A-State... played his second 45-minute game of the year at Ga. Southern and hit a trio of three-pointers... matched a season-high and led the team with 15 points against UALR at home... matched his season-high again against South Alabama... set his season-high with 15 points at Samford... recorded 13 points vs. LSU... tallied career-highs of 12 assists and three steals against Louisiana College and also had a double-double with 12 points... posted 12 points on four-for-five shooting against Central Baptist... registered 13 points in 40 minutes against NSU... dished out seven assists against Coastal Carolina at the Battle 4 Atlantis... netted 11 points on a trio of three-pointers, including one in the final seconds of regulation to send the game to overtime against No. 8 Florida, and played 45 minutes... registered 14 points, including a trio of three-pointers in the second half, to go along with his six assists in a win at UAB... led the team with nine points at New Mexico

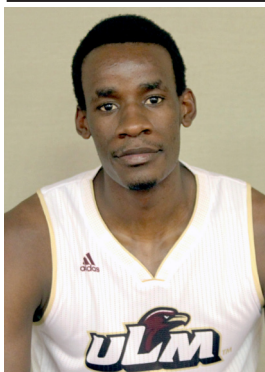
2013-14 (FRESHMAN) - 2013-14 College Sports Madness SBC Freshman of the Year One of two players to start all 27 games for the Warhawks... led the team in minutes with 33.3 per game... played 40 minutes nine times and tied the school record of five in a row set in 1999-2000 by Maurice Bell... in conference play, ranked third in the league in minutes (36.1 mpg), seventh in three-point field goal percentage (.407) and top-10 in assists (2.9 apg)... tallied nine double-figure scoring games including a career-high 16 points at Georgia State where he hit four three-pointers... drained a career-high six field goals at UALR in the regular season finale and scored 15 points... dished out a career-high eight assists in an overtime victory at Northwestern State... pulled down a career-high six rebounds at home versus WKU... scored 10 points in the season opener at No. 5 Kansas... led the team in minutes in 12 games and assists in 10 games... averaged 6.9 points and 3.3 assists per game on the year





# ULM Warhawks Men's Basketball

## University of Louisiana at Monroe



### 12 Tylor Ongwae

Senior | Forward | 6-7 | 205  
Eldoret, Kenya | Ranger College

	Season-High	Career-High
Pts	25, vs. two times	27, two times
FG	10, two times	11, vs. ULL (1/4/14)
3FG	4, at ASU (2/21/15)	4, two times
FT	10, vs. USA (1/31/15)	10, vs. USA (1/31/15)
Ast	9, vs. NSU (12/9/14)	9, vs. NSU (12/9/14)
Reb	13, vs. USA (1/31/15)	13, vs. USA (1/31/15)
Blocks	2, two times	3, vs. ULL (1/4/14)
Steals	4, at UALR (2/5/15)	5, vs. UALR (2/15/14)
Min	45, at GS (2/7/15)	46, vs. ULL (1/4/14)



### 13 Major Deng

Junior | Forward | 6-10 | 190  
Adelaide, Australia | Indian Hills CC

	Season-High	Career-High
Pts	21, at UALR (2/5/15)	21, at UALR (2/5/15)
FG	7, two times	7, two times
3FG	3, two times	3, two times
FT	6, vs. Troy (1/15/15)	6, vs. Troy (1/15/15)
Ast	3, vs. UTA (1/22/15)	3, vs. UTA (1/22/15)
Reb	15, vs. UALR (1/17/15)	15, vs. UALR (1/17/15)
Blocks	4, at UAB (11/15/14)	4, at UAB (11/15/14)
Steals	2, three times	2, three times
Min	40, two times	40, two times

Opp	GS	Min	FG-FGA/Pct.	3FG-FGA	FT-FTA/PCT	O-D-T	PF-FO	A	TO	Blk	Stl	Pts/Avg
UAB	*	34	8-17/.471	0-0/.000	2-3/1.000	3-6-9	5-1	2	3	0	1	18/18.0
CH BAP	*	12	8-10/.800	0-0/.000	0-0/.000	4-1-5	0-0	0	0	1	2	16/17.0
Florida	*	39	8-14/.585	0-1/.000	3-6/.625	3-5-8	4-0	3	3	2	0	19/17.7
C. Car	*	28	3-10/.300	0-3/.000	1-1/1.000	0-4-4	1-0	2	3	0	0	7/15.0
RMU	*	32	2-6/.333	0-0/.000	3-3/1.000	3-1-4	3-0	1	2	1	1	7/13.4
La. Col	*	30	9-15/.600	0-0/.000	4-5/.800	6-3-9	2-0	1	3	0	1	22/14.8
NSU	*	39	6-8/.750	0-0/.000	7-8/.875	2-8-10	3-0	9	4	0	0	19/15.4
N.M.	*	30	2-11/.182	1-3/.333	3-4/.750	2-5-7	3-0	1	2	0	0	8/14.5
CE BAP	*	38	10-16/.625	1-3/.333	4-4/1.000	2-3-5	2-0	6	1	0	1	25/15.7
LSU-A	*	38	9-15/.600	1-2/.500	6-6/1.000	2-4-6	3-0	4	2	0	1	25/16.6
Samford	*	39	2-14/.143	0-1/.000	5-6/.833	3-3-6	2-0	4	2	0	0	9/15.9
Ga. St.	*	22	0-7/.000	0-0/.000	0-0/.000	0-0-0	3-0	2	1	0	1	0/14.6
Ark. St.	*	36	4-7/.571	0-0/.000	2-2/1.000	1-6-7	0-0	1	3	2	1	10/14.2
UTA	*	29	2-7/.286	0-1/.000	3-3/1.000	2-4-6	5-1	5	1	0	1	7/13.7
TXST	*	35	4-10/.400	0-0/.000	9-9/1.000	3-5-8	1-0	2	1	1	2	17/13.9
Troy	*	35	7-15/.467	1-5/.200	0-1/.000	5-5-10	1-0	1	1	1	0	15/14.0
UALR	*	40	4-11/.364	0-2/.000	5-5/1.000	3-6-9	3-0	3	1	1	0	13/13.9
UL-L	*	34	5-11/.455	0-0/.000	3-5/.600	1-4-5	1-0	2	1	0	2	13/13.9
UTA	*	37	4-14/.286	1-4/.250	0-0/.000	2-6-8	4-0	2	4	0	1	9/13.6
Ga. So.	*	37	4-13/.308	0-3/.000	9-10/.900	2-8-10	2-0	0	1	0	1	17/13.8
Troy	*	35	3-12/.250	0-2/.000	0-0/.000	6-3-9	3-0	5	2	0	0	6/13.4
USA	*	38	3-13/.231	0-1/.000	10-11/.909	3-10-13	0-0	4	4	0	0	16/13.5
UALR	*	36	8-13/.615	2-5/.400	3-3/1.000	1-5-6	1-0	4	5	0	4	21/13.9
Ga. So.	*	45	8-14/.571	1-4/.250	2-2/1.000	0-5-5	2-0	2	4	1	3	19/14.1
UL-L	*	40	8-15/.533	3-5/.600	2-2/1.000	2-5-7	1-0	2	4	0	1	21/14.4
App. St.	*	40	6-13/.462	0-2/.000	2-3/.667	1-6-7	2-0	7	4	1	2	14/14.3
Ark. St.	*	40	7-14/.500	4-8/.500	3-2/1.000	3-4-7	1-0	2	2	0	3	20/14.6
USA	*	39	6-13/.462	1-3/.333	1-2/.500	4-4-8	4-0	3	0	0	0	14/14.5
App. St.	*	33	3-11/.273	0-1/.000	0-0/.000	2-3-5	1-0	2	3	0	0	6/14.2
Ga. St.	*	40	2-14/.143	0-4/.000	4-7/.571	4-2-6	4-0	4	7	0	1	8/14.0
TXST												
TBA												
<b>Totals</b>	<b>30</b>	<b>1050</b>	<b>155-363/.427</b>	<b>16-63/.254</b>	<b>95-112/.848</b>	<b>75-134-209</b>	<b>67-2</b>	<b>86</b>	<b>74</b>	<b>11</b>	<b>30</b>	<b>421/14.0</b>

Opp	GS	Min	FG-FGA/Pct.	3FG-FGA	FT-FTA/PCT	O-D-T	PF-FO	A	TO	Blk	Stl	Pts/Avg
UAB	*	25	5-9/.556	2-4/.500	1-2/.500	1-4-5	1-0	2	0	4	2	13/13.0
CH BAP	*	20	2-4/.500	0-2/.000	3-3/1.000	0-6-6	2-0	2	2	2	1	7/10.0
Florida	*	35	1-7/.143	1-5/.200	0-0/.000	1-8-9	2-0	1	1	0	0	3/7.7
C. Car	*	35	5-10/.500	2-6/.333	2-2/1.000	1-9-10	2-0	0	0	3	0	14/9.3
RMU	*	19	0-4/.000	0-2/.000	2-2/1.000	1-0-1	3-0	0	2	0	0	2/7.8
La. Col	*	29	5-9/.556	1-2/.500	3-6/.500	2-9-11	2-0	2	2	2	1	14/8.8
NSU	*	26	5-10/.500	1-1/1.000	3-4/.750	3-4-7	1-0	1	1	2	0	14/9.6
N.M.	*	26	3-8/.375	0-4/.000	0-0/.000	2-4-6	4-0	1	0	1	2	6/9.1
CE BAP	*	34	3-7/.429	0-0/.000	5-6/.833	4-7-11	2-0	2	3	3	1	11/9.3
LSU-A	*	21	1-2/.500	0-0/.000	0-0/.000	1-6-7	0-0	0	1	3	0	2/8.6
Samford	*	16	0-4/.000	0-1/.000	0-0/.000	0-3-3	1-0	0	0	1	0	0/7.8
Ga. St.	*	17	3-9/.333	0-2/.000	0-1/.000	4-4-8	1-0	1	1	1	0	6/7.7
Ark. St.	*	20	4-7/.571	0-2/.000	2-3/.667	1-5-6	4-0	2	3	0	1	10/7.8
UTA	*	34	6-9/.667	3-6/.500	0-0/.000	3-2-5	1-0	2	3	2	0	15/8.4
TXST	*	34	2-4/.500	2-4/.500	1-2/.500	2-6-8	2-0	2	2	3	2	7/8.3
Troy	*	28	4-10/.400	2-5/.400	6-6/1.000	1-5-6	0-0	2	0	1	1	16/8.8
UALR	*	34	4-6/.667	2-3/.667	4-8/.500	4-11-15	4-0	2	2	1	0	14/9.1
UL-L	*	28	3-7/.429	1-3/.333	1-2/.500	0-5-5	2-0	1	2	1	0	8/9.0
UTA	*	38	4-14/.286	2-5/.400	0-0/.000	0-2-2	1-0	3	1	2	1	10/9.1
Ga. So.	*	29	2-3/.667	1-2/.500	2-2/1.000	4-3-7	2-0	0	2	2	0	7/9.0
Troy	*	40	5-12/.417	3-6/.500	2-2/1.000	1-1-2	3-0	0	2	2	0	15/9.2
USA	*	31	7-12/.583	1-5/.200	2-2/1.000	1-7-8	4-0	0	0	2	0	17/9.6
UALR	*	29	7-10/.700	2-4/.500	5-6/.833	3-6-9	5-1	1	0	0	0	21/10.1
Ga. So.	*	30	1-3/.333	1-1/1.000	2-3/.667	2-4-6	4-0	0	2	0	1	5/9.9
UL-L	*	34	5-11/.455	2-4/.500	4-4/1.000	1-3-4	3-0	1	2	2	0	16/10.1
App. St.	*	24	4-9/.444	0-3/.000	5-5/1.000	0-4-4	5-1	1	0	1	0	13/10.2
Ark. St.	*	34	3-12/.250	0-4/.000	0-0/.000	3-6-9	2-0	1	1	1	0	6/10.1
USA	*	37	6-12/.500	1-1/1.000	1-2/.500	5-8-13	1-0	2	3	1	0	14/10.2
App. St.	*	35	2-8/.250	0-2/.000	0-0/.000	3-2-5	1-0	1	0	0	2	4/10.0
Ga. St.	*	40	3-12/.250	1-4/.250	0-1/.000	1-6-7	4-0	0	4	1	0	7/9.9
TXST												
TBA												
<b>Totals</b>	<b>29</b>	<b>878</b>	<b>105-238/.441</b>	<b>31-93/.333</b>	<b>56-74/.757</b>	<b>55-150-205</b>	<b>69-2</b>	<b>33</b>	<b>42</b>	<b>44</b>	<b>15</b>	<b>297/9.9</b>

#### 2014-15 (SENIOR) - Capital One Academic All-District First-Team

3x LSWA POW, 2x CSM POW, 2x CSM POW winner... 10+ points in seven of last eight games... six 20+ scoring games on the year... double-double with 16 points and a career-high 13 rebounds vs. USA... double-double with 17 points and 10 rebounds vs. Ga. Southern... double-double with 15 points and 10 rebounds vs. Troy... season-high 25 points vs. Central Baptist... matched his season-high with 25 points against LSU-A... double-double with 19 points and 10 rebounds vs. NSU and neared a triple-double with a career-high nine assists... neared a double-double with 22 points and nine rebounds vs. La. College... poured in 19 points and grabbed eight rebounds in an overtime thriller at No. 8 Florida and head coach Billy Donovan said he was the best player on the court... netted 18 points in a victory over UAB and neared a double-double with nine rebounds

#### 2013-14 (JUNIOR) - 2013-14 All-SBC Third-Team | 2013-14 NABC All-District Second-Team | 2013-14 All-Louisiana Third-Team | 2013-14 College Sports Madness SBC Fourth-Team...

Became just the second ULM student-athlete in school history to earn All-Conference honors from the Sun Belt since joining the league... finished fourth in the league in scoring with 17.5 points per game and reached double-figures in 17 of 18 SBC contests... recorded double-digits in 24 of 27 games on the season and played at least 40 minutes three times... registered at least 20 points nine times... posted three double-doubles, with a career-high 27 points against both UL-L and Georgia State at home... led the team in scoring in 17 games... notched a career-high five steals at home vs. UALR, the most by a Warhawk in a single game on the season... played a career-high 46 minutes in the overtime win over UL-L and made a career-high 11 FG's... etched a team-high 20 points against UTA at the SBC Championships... one of two players to start all 27 games on the season... second on the team in rebounds (5.8 rpg), three-pointers made (27), blocks (19) and steals (30)... named to the NABC Honors Court for outstanding achievement in the classroom

#### JUNIOR (2014-15)

Double-double with 14 points and 13 rebounds at South Alabama... five double-doubles... career-high 21 points and also grabbed nine rebounds at UALR... put in 16 points at home vs. UL-Lafayette... etched 17 points on seven made field goals against South Alabama and also grabbed eight rebounds... registered 15 points in a career-high 40 minutes in an overtime win at Troy... grabbed a career-high 15 rebounds to go along with his 14 points and a double-double against UALR at home... netted 16 points and six free throws (6-6) vs. Troy... tallied 15 points on 6-9 shooting including a trio of three-pointers in an overtime win over UT Arlington... posted a double-double with 11 points and 11 rebounds in the win over Central Baptist... recorded 14 points, seven rebounds and two blocks and hit a big three-pointer in the end to defeat North-western State... tallied a double-double with 14 points and 11 rebounds in the win over Louisiana College... registered a double-double with 14 points and 10 rebounds against Coastal Carolina in the Battle 4 Atlantis... poured in 13 points, including a pair of three-pointers, in a win over UAB and also blocked four shots

#### PREVIOUS SCHOOL

Led Indian Hills Community College to the 2014 Regional and District Championships... guided the program to a 34-3 record in 2014 and a combined 60-7 record in his two years... hit a three-pointer against Southeastern for the win in double overtime in 2013... netted a career-high 16 points against John Wood CC



# ULM Warhawks Men's Basketball

## University of Louisiana at Monroe



### 20 Chinedu Amajoyi

Senior Guard | 6-3 | 195  
Rancho Cucamonga, Calif. | Kilgore College

	Season-High	Career-High
Pts	8, vs. CHBC (11/17/14)	12, vs. USA (2/27/14)
FG	4, vs. CHBC (11/17/14)	4, vs. USA (2/27/14)
3FG	N/A	3, two times
FT	2, at GSU (12/30/14)	10, vs. ASU (1/30/14)
Ast	6, vs. CHBC (11/17/14)	6, vs. CHBC (11/17/14)
Reb	4, at UAB (11/15/14)	8, two times
Blocks	N/A	1, two times
Steals	1, at GSU (12/30/14)	2, two times
Min	19, two times	36, at ASU (3/6/14)

Opp	GS	Min	FG-FGA/Pct.	3FG-FGA	FT-FTA/PCT	O-D-T	PF-FO	A	TO	Blk	Stl	Pts/Avg
UAB	8	0-3/0.00	0-1/0.00	0-0/0.00	1-3-4	1-0	1	2	0	0	0	0/0.0
CH BAP	19	4-7/571	0-2/0.00	0-0/0.00	0-2-2	3-0	6	0	0	0	0	8/4.0
Florida					DNP							
C. Car	3	0-0/0.00	0-0/0.00	0-0/0.00	0-0-0	0-0	0	1	0	0	0	0/2.7
RMU	1	0-0/0.00	0-0/0.00	0-0/0.00	0-0-0	0-0	0	0	0	0	0	0/2.0
La. Col	10	0-1/0.00	0-1/0.00	0-0/0.00	0-0-0	1-0	1	2	0	0	0	0/1.6
NSU					DNP							
N.M.	8	0-1/0.00	0-0/0.00	0-0/0.00	0-1-1	0-0	1	1	0	0	0	0/1.3
CE BAP	2	0-2/0.00	0-1/0.00	0-0/0.00	0-0-0	1-0	0	0	0	0	0	0/1.1
LSU-A					DNP							
Samford	13	0-1/0.00	0-0/0.00	0-0/0.00	0-1-1	1-0	0	0	0	0	0	0/1.0
Ga. St.	19	0-0/0.00	0-0/0.00	2-2/1.00	0-0-0	0-0	1	1	0	1	2	2/1.1
Ark. St.					DNP							
UTA	4	0-1/0.00	0-1/0.00	0-0/0.00	0-0-0	0-0	0	0	0	0	0	0/1.0
TXST					DNP							
Troy					DNP							
UALR					DNP							
UL-L	3	0-0/0.00	0-0/0.00	0-0/0.00	0-0-0	0-0	1	0	0	0	0	0/0.9
UTA					DNP							
Ga. So.					DNP							
Troy	4	0-1/0.00	0-1/0.00	0-0/0.00	0-0-0	0-0	1	0	0	0	0	0/0.8
USA	1	0-0/0.00	0-0/0.00	0-0/0.00	0-0-0	0-0	0	0	0	0	0	0/0.8
UALR	1	0-0/0.00	0-0/0.00	0-0/0.00	0-0-0	0-0	0	0	0	0	0	0/0.7
Ga. So.					DNP							
UL-L					DNP							
App. St.	3	0-0/0.00	0-0/0.00	0-0/0.00	0-1-1	0-0	0	0	0	0	0	0/0.7
Ark. St.	3	0-0/0.00	0-0/0.00	0-0/0.00	0-0-0	0-0	0	0	0	0	0	0/0.6
USA	1	0-0/0.00	0-0/0.00	0-0/0.00	0-0-0	0-0	0	0	0	0	0	0/0.6
App. St.	14	0-1/0.00	0-1/0.00	0-0/0.00	0-3-3	1-0	1	0	0	0	0	0/0.6
Ga. St.					DNP							
TXST												
TBA												
<b>Totals</b>	<b>1</b>	<b>117</b>	<b>4-18/.222</b>	<b>0-8/.000</b>	<b>2-2/1.000</b>	<b>1-11-12</b>	<b>8-0</b>	<b>13</b>	<b>7</b>	<b>0</b>	<b>1</b>	<b>10/0.6</b>

#### 2014-15 (SENIOR)

Scored eight points in 19 minutes in a win over Champion Baptist... seen action in 10 conference games and 18 on the year... started at Georgia State

#### 2013-14 (JUNIOR)

Finished top-10 in the league in three-point field goal percentage at .405 (15-37)... started in 11 of ULM's last 12 games and doubled his scoring average in that span... posted career-highs of 12 points and eight rebounds against South Alabama at home... became the only ULM student-athlete to hit 10 free throws in a game on the season as he went 10-12 at home against Arkansas State... registered three double-figure scoring games... played a career-high 36 minutes at Arkansas State and pulled down eight rebounds... drained a trio of three-pointers at both Texas State and Georgia State... averaged 4.1 points per game and made 22 appearances

#### PREVIOUS SCHOOL

Played two seasons at Kilgore College and led the Rangers to a 27-6 overall record and an East Texas JUCO Conference Championship ... Also guided Kilgore to the quarterfinals of the 2013 National Junior College Athletic Association National Tournament and started every game ... Averaged 5.9 points, 2.7 rebounds and 1.9 assists in 33 appearances ... Tallied five double-figure scoring games including a career-high 17 points on two separate occasions ... Shot .807 percent from the free-throw line

#### HIGH SCHOOL

An All-Conference honoree at Los Osos High School ... Averaged 15 points and seven rebounds per game while shooting .857 from the free throw line ... 1,000 point scorer in his career



### 22 Lance Richard

R-Freshman | Guard | 5-10 | 175  
Monroe, La. | Sterlington HS

	Season-High	Career-High
Pts	8, vs. CHBC (11/17/14)	8, vs. CHBC (11/17/14)
FG	3, vs. CHBC (11/17/14)	3, vs. CHBC (11/17/14)
3FG	2, vs. CHBC (11/17/14)	2, vs. CHBC (11/17/14)
FT	N/A	N/A
Ast	N/A	N/A
Reb	3, vs. CHBC (11/17/14)	3, vs. CHBC (11/17/14)
Blocks	1, vs. RMU (11/17/14)	1, vs. RMU (11/17/14)
Steals	1, two times	1, two times
Min	15, vs. CHBC (11/17/14)	15, vs. CHBC (11/17/14)

Opp	GS	Min	FG-FGA/Pct.	3FG-FGA	FT-FTA/PCT	O-D-T	PF-FO	A	TO	Blk	Stl	Pts/Avg
UAB	1	0-0/.000	0-0/.000	0-0/.000	0-0-0	0-0	0	0	0	0	0	0/0.0
CH BAP	15	3-8/.375	2-7/.286	0-0/.000	0-3-3	1-0	0	1	0	1	8/4.0	
Florida	1	0-0/.000	0-0/.000	0-0/.000	0-0-0	0-0	0	0	0	0	0/2.7	
C. Car	1	0-2/.000	0-2/.000	0-0/.000	0-0-0	0-0	0	0	0	0	0/2.0	
RMU	5	1-2/.500	1-2/.500	0-0/.000	0-0-0	2-0	0	0	1	0	3/2.2	
La. Col	5	1-3/.333	1-3/.333	0-0/.000	0-0-0	0-0	0	0	0	0	3/2.3	
NSU				DNP								
N.M.	1	0-1/.000	0-1/.000	0-0/.000	0-0-0	0-0	0	0	0	0	0/2.0	
CE BAP	3	0-1/.000	0-1/.000	0-0/.000	0-0-0	0-0	0	0	0	1	0/1.8	
LSU-A	0+	0-1/.000	0-1/.000	0-0/.000	0-0-0	0-0	0	0	0	0	0/1.6	
Samford	2	0-0/.000	0-0/.000	0-0/.000	0-0-0	0-0	0	0	0	0	0/1.4	
Ga. St.	5	1-2/.500	1-2/.500	0-0/.000	0-0-0	0-0	0	1	0	0	3/1.5	
Ark. St.				DNP								
UTA	6	1-2/.500	1-2/.500	0-0/.000	0-1-1	1-0	0	0	0	0	3/1.7	
TXST				DNP								
Troy				DNP								
UALR				DNP								
UL-L				DNP								
UTA				DNP								
Ga. So.	4	0-2/.000	0-2/.000	0-0/.000	0-1-1	0-0	0	0	0	0	0/1.5	
Troy	0+	0-1/.000	0-0/.000	0-0/.000	1-0-1	0-0	0	0	0	0	0/1.4	
USA				DNP								
UALR	1	0-0/.000	0-0/.000	0-0/.000	0-0-0	0-0	0	0	0	0	0/1.3	
Ga. So.				DNP								
UL-L				DNP								
App. St.	1	0-0/.000	0-0/.000	0-0/.000	0-0-0	0-0	0	0	0	0	0/1.3	
Ark. St.				DNP								
USA	1	0-0/.000	0-0/.000	0-0/.000	0-0-0	0-0	0	0	0	0	0/1.2	
App. St.	4	0-1/.000	0-1/.000	0-0/.000	0-0-0	0-0	0	0	0	0	0/1.1	
Ga. St.				DNP								
TXST												
TBA												
Totals	56	7-26/.269	6-24/.250	0-0/.000	1-5-6	4-0	0	2	1	2	20/1.1	

#### 2014-15 (R-FRESHMAN)

Netted a career-high eight points and hit a pair of three-pointers in a win over Champion Baptist... hit a three-pointer in an overtime win over UT Arlington... drilled a three-pointer and also rejected a shot against Robert Morris at the Battle 4 Atlantis... seen action in seven conference games and 17 on the year

#### 2013-14 (FRESHMAN)

Redshirted... will still have four years of eligibility remaining

#### HIGH SCHOOL

Played three seasons at Sterlington High School ... Guided the Panthers to a 25-8 record as a senior and a second round appearance in the Louisiana High School Athletic Association playoffs ... Averaged 12 points and 3 assists per game his senior year ... Earned All-District honors from 2010-2013



# ULM Warhawks Men's Basketball

## University of Louisiana at Monroe



### 32 Justin Roberson

Junior | Guard | 6-1 | 185  
Natchitoches, La. | Western Texas

	Season-High	Career-High
Pts	19, vs. CEBC (12/16/14)	19, vs. CEBC (12/16/14)
FG	8, vs. CEBC (12/16/14)	8, vs. CEBC (12/16/14)
3FG	1, six times	1, six times
FT	8, vs. UALR (1/17/15)	8, vs. UALR (1/17/15)
Ast	7, at UALR (2/5/15)	7, at UALR (2/5/15)
Reb	7, two times	7, two times
Blocks	2, vs. RMU (11/27/14)	2, vs. RMU (11/27/14)
Steals	4, at TXST (1/10/15)	4, at TXST (1/10/15)
Min	40, at Troy (1/29/15)	40, at Troy (1/29/15)

Opp	GS	Min	FG-FGA/Pct.	3FG-FGA	FT-FTA/PCT	O-D-T	PF-FO	A	TO	Blk	Stl	Pts/Avg
UAB	*	32	6-11/.545	0-0/.000	6-6/1.000	1-3-4	1-0	5	1	0	2	18/18.0
CH BAP	*	15	4-5/.800	0-0/.000	1-2/.500	0-1-1	1-0	2	1	0	3	9/13.5
Florida	*	26	1-6/.167	0-1/.000	0-0/..000	0-1-1	5-1	0	3	0	2	2/9.7
C. Car	*	29	4-7/.571	1-3/.333	2-2/1.000	0-7-7	2-0	2	2	0	0	11/10.0
RMU	*	31	6-10/.600	0-2/.000	0-0/.000	0-4-4	3-0	6	3	2	0	12/10.4
La. Col	*	26	5-7/.714	0-1/.000	2-2/1.000	0-3-3	4-0	1	5	0	2	12/10.7
NSU	*	28	4-6/.667	0-1/.000	0-2/.000	0-3-3	4-0	2	3	0	1	8/10.3
N.M.	*	32	3-11/.273	0-1/.000	0-1/.000	0-4-4	0-0	1	2	0	2	6/9.8
CE BAP	*	31	8-12/.667	1-2/.500	2-2/1.000	0-4-4	2-0	4	0	0	2	19/10.8
LSU-A	*	30	2-6/.333	0-0/.000	2-3/.667	0-7-7	5-1	4	2	0	0	6/10.3
Samford	*	25	1-10/.100	1-1/1.000	0-0/.000	3-3-6	0-0	2	3	0	1	3/9.6
Ga. St.		13	0-5/.000	0-1/.000	0-1/.000	0-0-0	2-0	0	0	0	0	0/8.8
Ark. St.		19	4-7/.571	0-0/.000	2-3/.667	0-1-1	2-0	1	0	0	0	10/8.9
UTA		23	2-10/.200	1-3/.333	0-0/.000	1-5-6	5-1	1	1	0	0	5/8.6
TXST		17	5-9/.556	0-1/.000	0-0/.000	0-2-2	5-1	2	3	0	4	10/8.7
Troy		26	4-9/.444	1-1/1.000	0-0/.000	0-1-1	1-0	0	0	0	1	9/8.8
UALR		24	2-6/.333	0-3/.000	8-9/.889	0-3-3	1-0	1	3	0	0	12/8.9
UL-L		28	3-7/.429	0-0/.000	2-5/.400	1-5-6	3-0	4	1	1	1	8/8.9
UTA		27	2-10/.200	0-1/.000	3-4/.750	3-2-5	2-0	3	3	0	0	7/8.8
Ga. So.		21	2-6/.333	0-3/.000	1-2/.500	1-4-5	2-0	3	1	0	0	5/8.6
Troy	*	40	2-11/.182	0-1/.000	5-6/.833	1-4-5	1-0	1	1	1	3	9/8.6
USA	*	33	4-11/.364	0-2/.000	1-1/1.000	1-3-4	5-1	6	1	1	2	9/8.6
UALR	*	39	4-10/.400	0-3/.000	0-0/.000	0-5-5	3-0	7	2	1	0	8/8.6
Ga. So.	*	31	1-4/.250	0-0/.000	3-4/.750	0-1-1	1-0	6	2	0	0	5/8.5
UL-L	*	34	5-13/.385	0-1/.000	4-6/.667	3-3-6	1-0	2	2	1	3	14/8.7
App. St.	*	14	6-7/.857	0-0/.000	1-1/1.000	1-1-2	2-0	2	0	0	0	13/8.8
Ark. St.	*	31	3-11/.273	0-0/.000	1-2/.500	2-3-5	2-0	4	1	0	1	7/8.8
USA	*	30	6-18/.333	0-0/.000	6-9/.666	5-0-5	3-0	4	2	1	3	18/9.1
App. St.	*	25	4-7/.571	1-1/1.000	1-1/1.000	1-1-2	4-0	0	2	0	1	10/9.1
Ga. St.	*	37	4-9/.444	0-1/.000	3-4/.750	4-1-5	3-0	3	1	0	0	11/9.2
TXST												
TBA												
<b>Totals</b>	<b>21</b>	<b>817</b>	<b>107-261/.410</b>	<b>6-34/.176</b>	<b>56-78/.718</b>	<b>28-85-113</b>	<b>75-5</b>	<b>79</b>	<b>51</b>	<b>8</b>	<b>34</b>	<b>276/9.2</b>

#### JUNIOR (2014-15)

Tallied a team-high 18 points, five rebounds, four assists, three steals and a block at South Alabama... registered 13 points on 6-7 shooting vs. Appalachian State... recorded 14 points, six rebounds and three steals vs. UL-Lafayette at home... dished out a career-high seven assists at UALR... put in 12 points and drained a career-high eight free throws (8-9) vs. UALR at home... scored 10 points against both Arkansas State and Texas State... career-high 19 points and eight made field goals in the win over Central Baptist... reached double-figures with 12 points on 5-7 shooting against Louisiana College... registered a team and game-high of 18 points, including a perfect 6-6 FT, to go along with his five assists in a win over UAB... recorded a career-high three steals against Champion Baptist... netted 11 points and grabbed a career-high seven rebounds against Coastal Carolina... drained 12 points with six assists and two blocks against Robert Morris

#### PREVIOUS SCHOOL

Led Western Texas Junior College to a 23-8 record and averaged 14.2 points, 3.5 rebounds, 4.0 assists and 2.0 steals per game... named to the All-Western Texas Conference First-Team... memorable dunk over a 6-8 post player after driving down the lane

#### HIGH SCHOOL

Lettered in both basketball and football at Natchitoches Central HS and earned All-State in both sports

### Individual Career Totals for Returning Student-Athletes

*Only includes statistics at ULM*

#### Points

T. Ongwae	859
N. Coppola	470
M. Williams	392
D. Harvey	193
C. Amajoyi	101

#### Steals

T. Ongwae	60
N. Coppola	39
M. Williams	21
D. Harvey	19
C. Amajoyi	10

#### Field Goals M-A

T. Ongwae	307-724
N. Coppola	165-417
M. Williams	162-312
D. Harvey	76-134
C. Amajoyi	29-87

#### Free Throws M-A

T. Ongwae	213-251
M. Williams	66-108
N. Coppola	67-95
D. Harvey	37-64
C. Amajoyi	28-38

#### Rebounds

T. Ongwae	364
M. Williams	218
D. Harvey	200
N. Coppola	158
C. Amajoyi	79

#### Three-Pointers M-A

N. Coppola	71-193
T. Ongwae	43-163
C. Amajoyi	15-48
M. Williams	2-8

#### Assists

N. Coppola	206
T. Ongwae	125
D. Harvey	27
C. Amajoyi	24
M. Williams	19

#### Games/Starts

T. Ongwae	57/57
N. Coppola	57/57
D. Harvey	57/9
M. Williams	46/37
C. Amajoyi	40/15

#### Blocks

M. Williams	42
T. Ongwae	30
D. Harvey	24
C. Amajoyi	2

#### Minutes

N. Coppola	1982
T. Ongwae	1903
M. Williams	1064
D. Harvey	827
C. Amajoyi	498

### ULM's 2014-15 Record When it Has...

#### Five Double-Figure Scorers (2-0)

vs. Northwestern State  
vs. UALR

#### Two Double-Figure Scorers (2-9)

at No. 8 Florida  
vs. Coastal Carolina  
vs. Robert Morris  
at Samford  
vs. Troy (win)  
vs. UT Arlington  
vs. Georgia Southern  
at Troy (win)  
at Arkansas State  
at Appalachian State

#### Four Double-Figure Scorers (6-0)

at UAB  
vs. Champion Baptist  
vs. Louisiana College  
vs. Central Baptist  
vs. Arkansas State  
at UALR

#### Three Double-Figure Scorers (8-1)

vs. LSU-Alexandria  
at UT Arlington  
at Texas State  
vs. South Alabama  
at Georgia Southern  
vs. UL-Lafayette  
vs. Appalachian State  
at South Alabama  
vs. Georgia State (loss)

#### One Double-Figure Scorer (1-0)

at UL-Lafayette

#### No Double-Figure Scorers (0-2)

at New Mexico  
at Georgia State





# ULM Warhawks Men's Basketball

University of Louisiana at Monroe

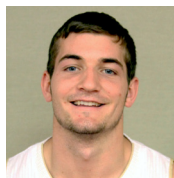


## Media Roster



### **0 Marvin Williams**

Senior | Center  
6-8 | 245  
Memphis, Tenn.  
NW Florida State College



### **11 Nick Coppola**

Sophomore | Guard  
5-11 | 190  
Richmond, Va.  
Benedictine Prep



### **1 Alex Brown**

Freshman | Guard  
6-4 | 185  
Vernon, Fla.  
Vernon HS



### **12 Tylor Ongwae**

Senior | Forward  
6-7 | 205  
Eldoret, Kenya  
Ranger College



### **2 DeMondre Harvey**

Junior | Forward  
6-7 | 210  
Minden, La.  
Pearl River CC



### **13 Majok Deng**

Junior | Forward  
6-10 | 190  
Adelaide, Australia  
Indian Hills CC



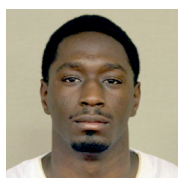
### **3 Prince Cooper**

Sophomore | Guard  
6-4 | 215  
Freeport, Bahamas  
Miami-Dade College



### **20 Chinedu Amajoyi**

Senior | Guard  
6-3 | 195  
Rancho Cucamonga, Calif.  
Kilgore College



### **4 Mack Foster**

Junior | Guard  
6-2 | 185  
Beulah, Miss.  
East Mississippi CC



### **22 Lance Richard**

R-Freshman | Guard  
5-10 | 170  
Monroe, La.  
Sterlington HS



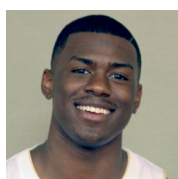
### **5 Jamaal Samuel**

Junior | Forward  
6-9 | 205  
New Orleans, La.  
Illinois State



### **32 Justin Roberson**

Junior | Guard  
6-1 | 185  
Natchitoches, La.  
Western Texas



### **10 Roderick Taylor**

Freshman | Forward  
6-8 | 210  
Harker Heights, Texas  
Harker Heights HS



### **Head Coach Keith Richard**

ULM '82  
Fifth Year at ULM  
14th Year Overall  
Baton Rouge, La.